

## Recombinant Human ATP1A1 protein, His-Myc-tagged

Cat. No. ATP1A1-4627H Lot. No. (See product label)

### SPECIFICATION

**Product Overview** Recombinant Human ATP1A1 protein(P05023)(339-772 aa), fused with N-terminal His tag and C-terminal Myc tag, was expressed in E.coli.

**Species** Human

**Source** E.coli

**ProteinLength** 339-772 aa

**Form** For liquid formulations, the standard storage buffer consists of a Tris or PBS based solution supplemented with 5-50% glycerol. When provided as lyophilized powder, the product undergoes freeze-drying from a Tris- or PBS-based formulation containing 6% trehalose, adjusted to pH 8.0 prior to the lyophilization process.

**Molecular Mass** 54.6 kDa

**AASequence**

```

TVTVCCLTLAKRMARKNCLVKNLEAVETLGSTSTICSDKTGTLTQNRMTVAHMWFD
NQIHEADTTENQSGVSFDKTSATWLALSRIAGLCNRAVFQANQENLPILKRAVAGDA
SESALLKCIELCCGSVKEMRERYAKIVEIPFNSTNKYQLSIHKNPNTSEPPQHLLVMKG
APERILDRCSSILLHGKEQPLDEELKDAFQNAVLELGGGLGERVLGFCHLFLPDEQFPE
GFQFDTDVNFPIIDNLFCVGLISMIDPPRAAVPDAVGKCRSAGIKVIMVTGDHPITAK
AIAKGVGIISEGNETVEDIAARLNIPVSQVNPRDAKACVVHGSDLKDMTSEQLDDILKY
HTEIVFARTSPQKLIIVEGCQRQGAIVAVTGDGVNDSPALKKADIGVAMGIAGSDVS
KQAADMILLDDNFASIVTGVEEGRLIFDNL
    
```

 Tel: 1-631-559-9269 1-516-512-3133

 Email: [info@creative-biomart.com](mailto:info@creative-biomart.com)  Fax: 1-631-938-8127

 45-1 Ramsey Road, Shirley, NY 11967, USA

<b>Purity</b>	Greater than 90% as determined by SDS-PAGE.
<b>Storage</b>	Store at -20°C/-80°C upon receipt, aliquoting is necessary for mutiple use. Avoid repeated freeze-thaw cycles.
<b>Reconstitution</b>	Please reconstitute protein indeionized sterile water to a concentration of 0.1-1.0 mg/mL. Aliquot for long-term storage at -80°C.

## GENE INFORMATION

<b>Gene Name</b>	ATP1A1 ATPase, Na+/K+ transporting, alpha 1 polypeptide [ Homo sapiens ]
<b>Official Symbol</b>	ATP1A1
<b>Synonyms</b>	ATP1A1; ATPase, Na+/K+ transporting, alpha 1 polypeptide; sodium/potassium-transporting ATPase subunit alpha-1; sodium pump 1; Na+/K+ ATPase 1; Na,K-ATPase alpha-1 subunit; sodium pump subunit alpha-1; Na+, K+ ATPase alpha subunit; Na(+)/K(+) ATPase alpha-1 subunit; Na, K-ATPase, alpha-A catalytic polypeptide; sodium-potassium-ATPase, alpha 1 polypeptide; Na,K-ATPase catalytic subunit alpha-A protein; MGC3285; MGC51750;
<b>Gene ID</b>	476
<b>mRNA Refseq</b>	NM_000701
<b>Protein Refseq</b>	NP_000692
<b>MIM</b>	182310
<b>UniProt ID</b>	P05023

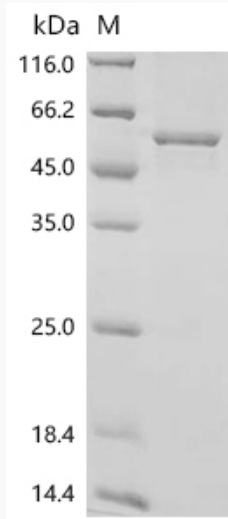
 Tel: 1-631-559-9269 1-516-512-3133

 Email: [info@creative-biomart.com](mailto:info@creative-biomart.com)  Fax: 1-631-938-8127

 45-1 Ramsey Road, Shirley, NY 11967, USA



SDS-PAGE



Tel: 1-631-559-9269 1-516-512-3133

Email: [info@creative-biomart.com](mailto:info@creative-biomart.com) Fax: 1-631-938-8127

45-1 Ramsey Road, Shirley, NY 11967, USA