

Recombinant Human ATP1A2 Protein (Lys347-Glu700), N-His-tagged

Cat. No. ATP1A2-0550H **Lot. No.** (See product label)

SPECIFICATION

Product Overview	Recombinant human ATP1A2 (Lys347-Glu700) was fused with the N-His tag and was expressed in E. coli.
Species	Human
Source	E.coli
ProteinLength	Lys347-Glu700
Form	Lyophilized powder/frozen liquid
Molecular Mass	41.25 kDa
Purity	>90% as determined by SDS-PAGE
Notes	For research use only.
Storage	Use a manual defrost freezer and avoid repeated freeze thaw cycles. Store at 2 to 8 centigrade for one week. Store at -20 to -80 centigrade for twelve months from the date of receipt.
Storage Buffer	0.01M PBS, pH 7.4, 0.02% NLS
Reconstitution	Reconstitute in sterile water for a stock solution.

 Tel: 1-631-559-9269 1-516-512-3133

 Email: info@creative-biomart.com  Fax: 1-631-938-8127

 45-1 Ramsey Road, Shirley, NY 11967, USA

Shipping

They are shipped out with dry ice/blue ice unless customers require otherwise.

GENE INFORMATION
Gene Name

ATP1A2 ATPase, Na⁺/K⁺ transporting, alpha 2 polypeptide [Homo sapiens (human)]

Official Symbol

ATP1A2

Synonyms

ATP1A2; ATPase, Na⁺/K⁺ transporting, alpha 2 polypeptide; ATPase, Na⁺/K⁺ transporting, alpha 2 (+) polypeptide, MHP2, migraine, hemiplegic 2; sodium/potassium-transporting ATPase subunit alpha-2; FHM2; sodium-potassium ATPase; sodium pump subunit alpha-2; Na⁽⁺⁾/K⁽⁺⁾ ATPase alpha-2 subunit; Na⁺/K⁺ ATPase, alpha-B polypeptide; Na⁺/K⁺ ATPase, alpha-A(+) catalytic polypeptide; sodium/potassium-transporting ATPase alpha-2 chain; MHP2; MGC59864;

Gene ID

477

mRNA Refseq

NM_000702

Protein Refseq

NP_000693

MIM

182340

UniProt ID

P50993

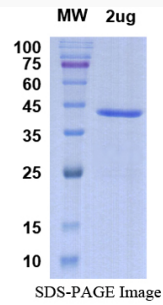
 Tel: 1-631-559-9269 1-516-512-3133

 Email: info@creative-biomart.com  Fax: 1-631-938-8127

 45-1 Ramsey Road, Shirley, NY 11967, USA



SDS-PAGE



Tel: 1-631-559-9269 1-516-512-3133

Email: info@creative-biomart.com Fax: 1-631-938-8127

45-1 Ramsey Road, Shirley, NY 11967, USA