

Recombinant Human ATP1A3 protein, GST-tagged

Cat. No. ATP1A3-3256H **Lot. No.** (See product label)

SPECIFICATION

Product Overview	Recombinant Human ATP1A3 protein(1-65 aa), fused with GST tag, was expressed in E. coli.
Species	Human
Source	E.coli
ProteinLength	1-65 aa
Form	The purified protein was Lyophilized from sterile PBS (58mM Na ₂ HPO ₄ ,17mM NaH ₂ PO ₄ , 68mM NaCl, pH8.). 5 % trehalose and 5 % mannitol are added as protectant before lyophilization. The elution buffer contain 100mM GSH.
AA Sequence	MGDKKDDKDSPKKNKGKERRDLDDLKKEVAMTEHKMSVEEVCRKYNTDCVQGLT HKAQEILARD
Purity	95%, by SDS-PAGE with Coomassie Brilliant Blue staining.
Storage	Short-term storage: Store at 2-8°C for (1-2 weeks). Long-term storage: Aliquot and store at -20°C to -80°C for up to 3 months, reconstitution with sterile water and addition of an equal volume of glycerol. Avoid repeat freeze-thaw cycles.
Reconstitution	Reconstitute at 0.25 g/μl in 200 μl sterile water for short-term storage. After reconstitution with sterile water, if glycerol has no effect on subsequent

 Tel: 1-631-559-9269 1-516-512-3133

 Email: info@creative-biomart.com  Fax: 1-631-938-8127

 45-1 Ramsey Road, Shirley, NY 11967, USA

experiments, it is recommended to add an equal volume of glycerol for long-term storage.

GENE INFORMATION

Gene Name [ATP1A3 ATPase, Na+/K+ transporting, alpha 3 polypeptide \[Homo sapiens \]](#)

Official Symbol [ATP1A3](#)

Synonyms

ATP1A3; ATPase, Na+/K+ transporting, alpha 3 polypeptide; dystonia 12 , DYT12; sodium/potassium-transporting ATPase subunit alpha-3; Na+/K+ ATPase 3; sodium pump subunit alpha-3; Na(+)/K(+) ATPase alpha-3 subunit; Na(+)/K(+) ATPase alpha(III) subunit; sodium-potassium-ATPase, alpha 3 polypeptide; sodium/potassium-transporting ATPase alpha-3 chain; RDP; DYT12; MGC13276

Gene ID [478](#)

mRNA Refseq [NM_001256213](#)

Protein Refseq [NP_001243142](#)

MIM [182350](#)

UniProt ID [P13637](#)

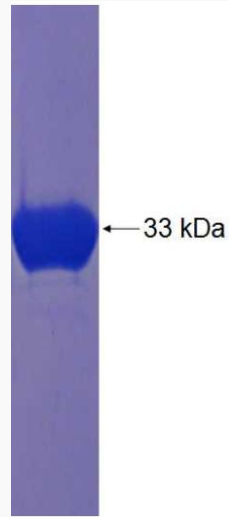
 Tel: 1-631-559-9269 1-516-512-3133

 Email: info@creative-biomart.com  Fax: 1-631-938-8127

 45-1 Ramsey Road, Shirley, NY 11967, USA



SDS-PAGE



Tel: 1-631-559-9269 1-516-512-3133

Email: info@creative-biomart.com Fax: 1-631-938-8127

45-1 Ramsey Road, Shirley, NY 11967, USA