

Recombinant Human ATP1A3 protein, GST-tagged

Cat. No. ATP1A3-963H Lot. No. (See product label)

SPECIFICATION

Product Overview	Human ATP1A3 full-length ORF (NP_689509.1, 1 a.a. - 1013 a.a.) recombinant protein with GST-tag at N-terminal.
Species	Human
Source	Wheat Germ
Description	<p>The protein encoded by this gene belongs to the family of P-type cation transport ATPases, and to the subfamily of Na⁺/K⁺ -ATPases. Na⁺/K⁺ -ATPase is an integral membrane protein responsible for establishing and maintaining the electrochemical gradients of Na and K ions across the plasma membrane. These gradients are essential for osmoregulation, for sodium-coupled transport of a variety of organic and inorganic molecules, and for electrical excitability of nerve and muscle. This enzyme is composed of two subunits, a large catalytic subunit (alpha) and a smaller glycoprotein subunit (beta). The catalytic subunit of Na⁺/K⁺ -ATPase is encoded by multiple genes. This gene encodes an alpha 3 subunit. Alternatively spliced transcript variants encoding different isoforms have been found for this gene. [provided by RefSeq, Jan 2012]</p>
Molecular Mass	138.1 kDa
AA Sequence	<p>MGDKKDDKDSPKKNKGKERRDLDLKKEVAMTEHKMSVEEVCRKYNTDCVQGLT HSKAQEILARDGPNALTPPPTTPEWVKFCRQLFGGFSILLWIGAILCFLAYGIQAGTE DDPSGDNLYLGIVLAAVVIITGCFSYYQEAKSSKIMESFKNMVPQQALVIREGKMQV</p>

 Tel: 1-631-559-9269 1-516-512-3133

 Email: info@creative-biomart.com  Fax: 1-631-938-8127

 45-1 Ramsey Road, Shirley, NY 11967, USA



NAEEVVVVDLVEIKGGDRVPADLRIISAHGCKVDNSSLTGESEPQTRSPDCTHDNPL
ETRNITFFSTNCVEGTARGVVVATGDRTVMGRIATLASGLEVGKTPAIEIEHFILQITG
VAVFLGVSFFILSLILGYTWLEAVIFLIGIIVANVPEGLLATVTVCLTLTAKRMARKNCLV
KNLEAVETLGSTSTICSDKTGTLTQNRMTVAHMWFDNQIHEADTTEDQSGTSFDKS
SHTWVALSHIAGLCNRAVFKGGQDNIPVLKRDVAGDASESALLKCIELSSGSVKLMR
ERNKKVAEIPFNSTNKYQLSIHETEDPNDNRYLLVMKGAPERILDRCSTILLQGKEQP
LDEEMKEAFQNAVYELGGLGERVLGFCHYYLPEEQFPKGFAFDCDDVNFTTDNLCF
VGLMSMIDPPRAAVPDAVGKCRSAGIKVIMVTGDHPITAKAIKGVGIISEGNETVEDI
AARLNIPVSQVNPRDAKACVIHGTDLKDFTSEQIDEILQNHTEIVFARTSPQQKLIIVEG
CQRQGAIVAVTGDGVNDSPALKKADIGVAMGIAGSDVSKQAADMILLDDNFASIVTG
VEEGRILFDNLKKSIAAYTLTSNIPEITPFLFIMANIPLPLGTITILCIDLGTDMVPAISLAY
EAAESDIMKRQPRNPRTDKLVNERLISMAYGQIGMIQALGGFFSYFVILAENGFLPGN
LVGIRLNWDDRTVNDLEDSYGQQWTYEQRKVVEFTCHTAFFVSIVVVQWADLIICKT
RRNSVFQQGMKNKILIFGLFEETALAAFLSYCPGMDVALRMYPLKPSWWFCAFPYS
FLIFVYDEIRKLILRRNPPGGWVEKETY

Applications

Enzyme-linked Immunoabsorbent Assay; Western Blot (Recombinant protein);
Antibody Production; Protein Array

Notes

Best use within three months from the date of receipt of this protein.

Storage

Store at -80 centigrade. Aliquot to avoid repeated freezing and thawing.

Storage Buffer

50 mM Tris-HCl, 10 mM reduced Glutathione, pH=8.0 in the elution buffer.

GENE INFORMATION

Gene Name

ATP1A3 ATPase, Na⁺/K⁺ transporting, alpha 3 polypeptide [Homo sapiens]

Official Symbol

ATP1A3

Tel: 1-631-559-9269 1-516-512-3133

Email: info@creative-biomart.com Fax: 1-631-938-8127

45-1 Ramsey Road, Shirley, NY 11967, USA

Synonyms ATP1A3; ATPase, Na⁺/K⁺ transporting, alpha 3 polypeptide; dystonia 12 , DYT12; sodium/potassium-transporting ATPase subunit alpha-3; Na⁺/K⁺ ATPase 3; sodium pump subunit alpha-3; Na(+)/K(+) ATPase alpha-3 subunit; Na(+)/K(+) ATPase alpha(III) subunit; sodium-potassium-ATPase, alpha 3 polypeptide; sodium/potassium-transporting ATPase alpha-3 chain; RDP; DYT12; MGC13276;

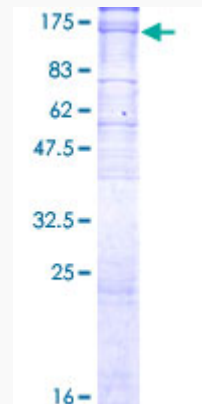
Gene ID 478

mRNA Refseq NM_001256213

Protein Refseq NP_001243142

MIM 182350

UniProt ID P13637



12.5% SDS-PAGE Stained with Coomassie Blue.

 Tel: 1-631-559-9269 1-516-512-3133

 Email: info@creative-biomart.com  Fax: 1-631-938-8127

 45-1 Ramsey Road, Shirley, NY 11967, USA