

Recombinant Human ATP1B1 protein, GST-tagged

Cat. No. ATP1B1-965H Lot. No. (See product label)

SPECIFICATION

Product Overview	Human ATP1B1 full-length ORF (AAH00006, 1 a.a. - 303 a.a.) recombinant protein with GST-tag at N-terminal.
Species	Human
Source	Wheat Germ
Description	<p>The protein encoded by this gene belongs to the family of Na⁺/K⁺ and H⁺/K⁺ ATPases beta chain proteins, and to the subfamily of Na⁺/K⁺ -ATPases. Na⁺/K⁺ -ATPase is an integral membrane protein responsible for establishing and maintaining the electrochemical gradients of Na and K ions across the plasma membrane. These gradients are essential for osmoregulation, for sodium-coupled transport of a variety of organic and inorganic molecules, and for electrical excitability of nerve and muscle.</p> <p>This enzyme is composed of two subunits, a large catalytic subunit (alpha) and a smaller glycoprotein subunit (beta). The beta subunit regulates, through assembly of alpha/beta heterodimers, the number of sodium pumps transported to the plasma membrane. The glycoprotein subunit of Na⁺/K⁺ -ATPase is encoded by multiple genes. This gene encodes a beta 1 subunit. Alternatively spliced transcript variants encoding different isoforms have been described, but their biological validity is not known. [provided by RefSeq, Mar 2010]</p>
Molecular Mass	58.96 kDa
AA Sequence	MARGKAKEEGSWKKFIWNSEKKEFLGRTGGSWFKILLFYVIFYGCLAGIFIGTIQVML

 Tel: 1-631-559-9269 1-516-512-3133

 Email: info@creative-biomart.com  Fax: 1-631-938-8127

 45-1 Ramsey Road, Shirley, NY 11967, USA

LTISEFKPTYQDRVAPPGLTQIPQIQKTEISFRPNPKSYEAYVLNIVRFLEKYKDSAQ
 RDDMIFEDCGDVPSEPKERGFDFNHERGERKVCRFKLEWLGNCGLNDETYGYKEG
 KPCIIIKLNRVLGFKPKPPKNESLETYPVMKYNPVLPVQCTGKRDEDKDKVGNVEY
 FGLGNSPGFPLQYYPYGGKLLQPKYLQPLLAVQFTNLTMDTEIRIECKAYGENIGYSE
 KDRFQGRFDVKIEVKS

Applications Enzyme-linked Immunoabsorbent Assay; Western Blot (Recombinant protein);
 Antibody Production; Protein Array

Notes Best use within three months from the date of receipt of this protein.

Storage Store at -80 centigrade. Aliquot to avoid repeated freezing and thawing.

Storage Buffer 50 mM Tris-HCl, 10 mM reduced Glutathione, pH=8.0 in the elution buffer.

GENE INFORMATION

Gene Name [ATP1B1 ATPase, Na⁺/K⁺ transporting, beta 1 polypeptide \[Homo sapiens \]](#)

Official Symbol [ATP1B1](#)

Synonyms ATP1B1; ATPase, Na⁺/K⁺ transporting, beta 1 polypeptide; ATP1B;
 sodium/potassium-transporting ATPase subunit beta-1; adenosinetriphosphatase; Na,
 K-ATPase beta-1 polypeptide; Beta 1-subunit of Na(+),K(+)-ATPase;
 sodium/potassium-dependent ATPase beta-1 subunit; sodium/potassium-transporting
 ATPase beta-1 chain; MGC1798;

Gene ID [481](#)

mRNA Refseq [NM_001677](#)

 Tel: 1-631-559-9269 1-516-512-3133

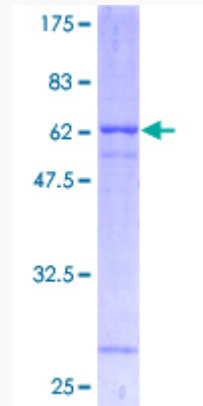
 Email: info@creative-biomart.com  Fax: 1-631-938-8127

 45-1 Ramsey Road, Shirley, NY 11967, USA

Protein Refseq NP_001668

MIM 182330

UniProt ID P05026



12.5% SDS-PAGE Stained with Coomassie Blue.

 Tel: 1-631-559-9269 1-516-512-3133

 Email: info@creative-biomart.com  Fax: 1-631-938-8127

 45-1 Ramsey Road, Shirley, NY 11967, USA