

Recombinant mouse ATPase, Na⁺/K⁺ transporting, beta 3 polypeptide Protein, Fc-tagged

Cat. No. ATP1B3-01H **Lot. No.** (See product label)

SPECIFICATION

| | |
|-------------------------|--|
| Product Overview | Recombinant mouse ATPase, Na ⁺ /K ⁺ transporting, beta 3 polypeptide with N-terminal Fc fusion tag was expressed in E. coli. |
| Species | Mus musculus |
| Source | E.coli |
| ProteinLength | 450 |
| Description | This is the non-catalytic component of the active enzyme, which catalyzes the hydrolysis of ATP coupled with the exchange of Na ⁺ and K ⁺ ions across the plasma membrane. The exact function of the beta-3 subunit is not known. |
| Form | Buffered aqueous solution |
| Molecular Mass | 50.9 kDa |
| AA Sequence | MDKTHTCPPCPAPELLGGPSVFLFPPKPKDTLMISRTPEVTCVVVDVSHEDPEVKFN WYVDGVEVHNAKTKPREEQYNSTYRVVSVLTVLHQDWLNGKEYKCKVSNKALPAPI EKTISKAKGQPREPQVYTLPPSRDELTKNQVSLTCLVKGFYPSDIAVEWESNGQPEN NYKTTTPVLDSGDSFFLYSKLTVDKSRWQQGNVFSCSVMHEALHNHYTQKSLSLSP GKTMWAMLQTLNDEVPKYRDQIPSPGLMVFPKQTALEYTFMSEPQTYKKLVEDL ESFLKPYSVEEQKNLTSCPDGAPFIQHGPDYRACQFPVSLLEECGVTDFANFGYSK GQPCLVKMNRIIDLIPDGYPQISCLPKEENATIATYPEFGVLDLKYFPYYGKKRHVGY |

 Tel: 1-631-559-9269 1-516-512-3133

 Email: info@creative-biomart.com  Fax: 1-631-938-8127

 45-1 Ramsey Road, Shirley, NY 11967, USA



RQPLVAVQVKFDSGLNKKEVTVECHIAGTRNLKNKNERDKFLGRVSKVTARA

Purity 90% by SDS-PAGE**Applications** ELISA, WB, Immunogen**Storage** Store it under sterile conditions at -20 to -80 °C. It is recommended that the protein be aliquoted for optimal storage. Avoid repeated freeze-thaw cycles.**Concentration** 9 mg/ml**Storage Buffer** Solution in 50mM Tris, 300mM NaCl, 0.1%skl, pH8.5

GENE INFORMATION

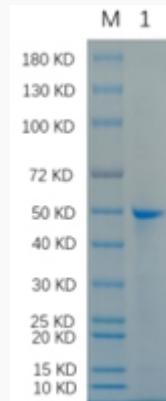
Gene Name [Atp1b3](#)**Official Symbol** [Atp1b3](#)**Synonyms** Sodium/potassium-dependent ATPase subunit beta-3 (ATPB-3)**Gene ID** [11933](#)**mRNA Refseq** [NM_007502.5](#)**Protein Refseq** [NP_031528.1](#)**UniProt ID** [P97370](#)

Tel: 1-631-559-9269 1-516-512-3133

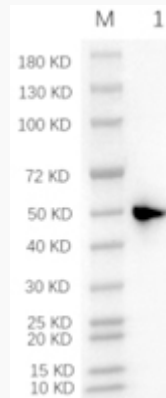
 Email: info@creative-biomart.com Fax: 1-631-938-8127

45-1 Ramsey Road, Shirley, NY 11967, USA

SDS-PAGE



WB



 Tel: 1-631-559-9269 1-516-512-3133

 Email: info@creative-biomart.com  Fax: 1-631-938-8127

 45-1 Ramsey Road, Shirley, NY 11967, USA