

## Recombinant Mouse ATP1B3 Protein, Fc-tagged

Cat. No. ATP1B3-01M Lot. No. (See product label)

### SPECIFICATION

<b>Product Overview</b>	Recombinant Mouse ATP1B3 Protein, fused to Fc-tag, was expressed in E. coli.
<b>Species</b>	Mouse
<b>Source</b>	E.coli
<b>Description</b>	<p>Predicted to enable several functions, including ATPase activator activity; ATPase binding activity; and P-type sodium:potassium-exchanging transporter activity.</p> <p>Predicted to be involved in several processes, including cellular monovalent inorganic cation homeostasis; ion transmembrane transport; and positive regulation of cation transmembrane transport. Predicted to act upstream of or within ion transport.</p> <p>Located in cytoplasm. Is expressed in several structures, including early conceptus; heart; hemolymphoid system; nervous system; and sensory organ. Orthologous to human ATP1B3 (ATPase Na<sup>+</sup>/K<sup>+</sup> transporting subunit beta 3).</p>
<b>Form</b>	50mM Tris, 300mM NaCl, 0.1% skl, pH 8.5.
<b>Molecular Mass</b>	50.9 kDa
<b>AA Sequence</b>	<p>MDKTHTCPPCPAPELLGGPSVFLFPPKPKDTLMISRTPEVTCVVVDVSHEDPEVKFN  WYVDGVEVHNAKTKPREEQYNSTYRVVSVLTVLHQDWLNGKEYKCKVSNKALPAPI  EKTISKAKGQPREPQVYTLPPSRDELTKNQVSLTCLVKGFYPSDIAVEWESNGQPEN  NYKTTTPVLDSGDGSFFLYSKLTVDKSRWQQGNV FSCSVMHEALHNHYTQKSLSLSP  GKTMWAMLQTLNDEVPKYRDQIPSPGLMVFPKPQTALEYTFMSEPQTYKKLVEDL  ESFLKPYSVEEQKNLTSCPDGAPFIQHGPDYRACQFPVSLLEECSGVTDANFGYSK</p>

 Tel: 1-631-559-9269 1-516-512-3133

 Email: [info@creative-biomart.com](mailto:info@creative-biomart.com)  Fax: 1-631-938-8127

 45-1 Ramsey Road, Shirley, NY 11967, USA

GQPCILVKMNRIIDLIPDGYPQISCLPKEENATIATYPEFGVLDLKYFPYYGKKRHVGY  
RQPLVAVQVKFDSGLNKKEVTVECHIAGTRNLKNKNERDKFLGRVSVFKVTARA

**Purity** > 90%

**Storage** Store it under sterile conditions at -20 to -80 centigrade. It is recommended that the protein be aliquoted for optimal storage. Avoid repeated freeze-thaw cycles.

**Concentration** 9mg/ml

## GENE INFORMATION

**Gene Name** [Atp1b3 ATPase, Na<sup>+</sup>/K<sup>+</sup> transporting, beta 3 polypeptide \[ Mus musculus \(house mouse\) \]](#)

**Official Symbol** [Atp1b3](#)

**Synonyms** AA409958; AI664000; AW212096

**Gene ID** [11933](#)

**mRNA Refseq** [NM\\_007502](#)

**Protein Refseq** [NP\\_031528](#)

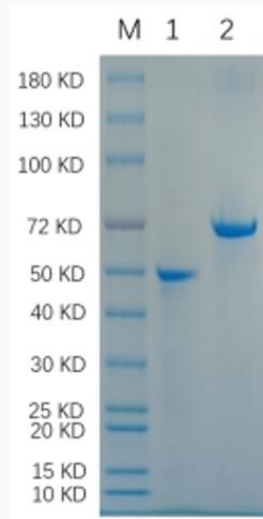
**UniProt ID** [P97370](#)

 Tel: 1-631-559-9269 1-516-512-3133

 Email: [info@creative-biomart.com](mailto:info@creative-biomart.com)  Fax: 1-631-938-8127

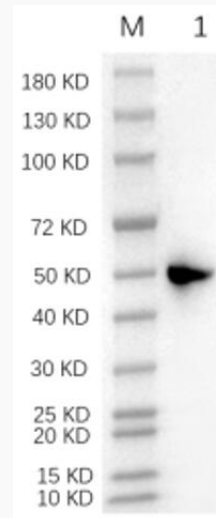
 45-1 Ramsey Road, Shirley, NY 11967, USA

**Reducing 12% SDS-  
PAGE and WB  
analysis profiles of  
purified CD298**



Lane1 CD298  
Lane2 BSA

**Reducing 12% SDS-  
PAGE and WB  
analysis profiles of  
purified CD298**



Anti-Fc

 Tel: 1-631-559-9269 1-516-512-3133

 Email: [info@creative-biomart.com](mailto:info@creative-biomart.com)  Fax: 1-631-938-8127

 45-1 Ramsey Road, Shirley, NY 11967, USA