

# Recombinant Full Length human ATP1B3 protein, Flag tagged

Cat. No. ATP1B3-20HFL Lot. No. (See product label)

## SPECIFICATION

<b>Product Overview</b>	Recombinant protein of human ATPase, Na <sup>+</sup> /K <sup>+</sup> transporting, beta 3 polypeptide (ATP1B3) with C-Flag tag was expressed in HEK293T.
<b>Species</b>	Human
<b>Source</b>	HEK293
<b>ProteinLength</b>	1-279 aa
<b>Tag</b>	C-Flag
<b>Molecular Mass</b>	31.3 kDa
<b>AA Sequence</b>	MTKNEKKSLNQSLAEWKLFIYNPTTGEFLGRTAKSWGLILLFYLVFYGFLAALFSFTM WVMLQTLNDEVPKYRDQIPSPGLMVFPKPVTALEYTFSRSDPTSYAGYIEDLKKFLK PYTLEEQKNLTVCPDGALFEQKGPVYVACQFPISLLQACSGMNDPDFGYSQGNPCI LVKMNRIIGLKPEGVPRIDCVSKNEDIPNVAVYPHNGMIDLKYFPYYGKKLHVGYLQP LVAVQVSFAPNNTGKEVTVECKIDGSANLKSQDDRDKFLGRVMFKITARATRTRPLE QKLISEEDLAANDILDYKDDDDKV
<b>Purity</b>	> 80% as determined by SDS-PAGE and Coomassie blue staining
<b>Notes</b>	For testing in cell culture applications, please filter before use. Note that you may experience some loss of protein during the filtration process.

 Tel: 1-631-559-9269 1-516-512-3133

 Email: [info@creative-biomart.com](mailto:info@creative-biomart.com)  Fax: 1-631-938-8127

 45-1 Ramsey Road, Shirley, NY 11967, USA

<b>Reconstitution</b>	Stable for 12 months from the date of receipt of the product under proper storage and handling conditions. Avoid repeated freeze-thaw cycles.
<b>Storage</b>	Store at -80 centigrade.
<b>Concentration</b>	>0.05 µg/µL as determined by microplate BCA method
<b>Storage Buffer</b>	25 mM Tris-HCl, 100 mM glycine, pH 7.3, 10% glycerol

## GENE INFORMATION

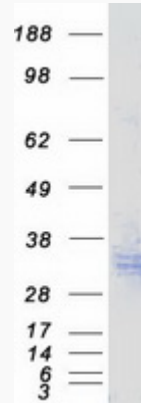
<b>Gene Name</b>	<a href="#">ATP1B3 ATPase Na<sup>+</sup>/K<sup>+</sup> transporting subunit beta 3 [ Homo sapiens (human) ]</a>
<b>Official Symbol</b>	<a href="#">ATP1B3</a>
<b>Synonyms</b>	ATP1B3; ATPase Na <sup>+</sup> /K <sup>+</sup> transporting subunit beta 3; CD298; ATPB-3; sodium/potassium-transporting ATPase subunit beta-3; ATPase, Na <sup>+</sup> /K <sup>+</sup> transporting, beta 3 polypeptide; Na, K-ATPase beta-3 polypeptide; sodium pump subunit beta-3; sodium-potassium ATPase subunit beta 3 (non-catalytic); sodium/potassium-dependent ATPase subunit beta-3; sodium/potassium-transporting ATPase beta-3 chain; EC 7.2.2.13
<b>Gene ID</b>	<a href="#">483</a>
<b>mRNA Refseq</b>	<a href="#">NM_001679</a>
<b>Protein Refseq</b>	<a href="#">NP_001670</a>
<b>MIM</b>	<a href="#">601867</a>
<b>UniProt ID</b>	<a href="#">P54709</a>

 Tel: 1-631-559-9269 1-516-512-3133

 Email: [info@creative-biomart.com](mailto:info@creative-biomart.com)  Fax: 1-631-938-8127

 45-1 Ramsey Road, Shirley, NY 11967, USA

**SDS-PAGE**



Coomassie blue staining of purified ATP1B3 protein.

 Tel: 1-631-559-9269 1-516-512-3133

 Email: [info@creative-biomart.com](mailto:info@creative-biomart.com)  Fax: 1-631-938-8127

 45-1 Ramsey Road, Shirley, NY 11967, USA