

Recombinant Human ATP1B3 Protein (Thr57-Ala279), C-His tagged

Cat. No. ATP1B3-4708H Lot. No. (See product label)

SPECIFICATION

Product Overview	Recombinant human ATP1B3 (Thr57-Ala279) fused with the C-terminal His tag was expressed in Mammalian cells.
Species	Human
Source	Mammalian Cells
ProteinLength	Thr57-Ala279
Form	Lyophilized powder/frozen liquid
Molecular Mass	24.64 kDa
Endotoxin	< 1.0 EU/μg of the protein as determined by the LAL method.
Purity	>90% as determined by SDS-PAGE.
Notes	For research use only.
Storage	Use a manual defrost freezer and avoid repeated freeze thaw cycles. Store at 2 to 8 centigrade for one week. Store at -20 to -80 centigrade for twelve months from the date of receipt.
Storage Buffer	Supplied as solution form in PBS or lyophilized from PBS.

 Tel: 1-631-559-9269 1-516-512-3133

 Email: info@creative-biomart.com  Fax: 1-631-938-8127

 45-1 Ramsey Road, Shirley, NY 11967, USA

Reconstitution Reconstitute in sterile water for a stock solution.

Shipping They are shipped out with dry ice/blue ice unless customers require otherwise.

GENE INFORMATION

Gene Name [ATP1B3 ATPase, Na+/K+ transporting, beta 3 polypeptide \[Homo sapiens \(human\) \]](#)

Official Symbol [ATP1B3](#)

Synonyms ATP1B3; ATPase, Na+/K+ transporting, beta 3 polypeptide; sodium/potassium-transporting ATPase subunit beta-3; CD298; FLJ29027; Na, K-ATPase beta-3 polypeptide; sodium/potassium-dependent ATPase beta-3 subunit; sodium/potassium-dependent ATPase subunit beta-3; sodium/potassium-transporting ATPase beta-3 chain; ATPB-3;

Gene ID [483](#)

mRNA Refseq [NM_001679](#)

Protein Refseq [NP_001670](#)

MIM [601867](#)

UniProt ID [P54709](#)

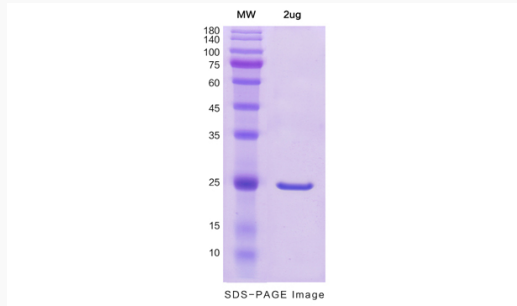
 Tel: 1-631-559-9269 1-516-512-3133

 Email: info@creative-biomart.com  Fax: 1-631-938-8127

 45-1 Ramsey Road, Shirley, NY 11967, USA



SDS-PAGE



Tel: 1-631-559-9269 1-516-512-3133

Email: info@creative-biomart.com Fax: 1-631-938-8127

45-1 Ramsey Road, Shirley, NY 11967, USA