

## Recombinant Rat ATP1B4 protein, His & T7-tagged

Cat. No. ATP1B4-1535R Lot. No. (See product label)

### SPECIFICATION

<b>Product Overview</b>	Recombinant Rat ATP1B4 aa. (Met132~Thr356 (Accession # Q9R193)) fused with N-terminal His & T7 tag was produced in E. coli cells.
<b>Species</b>	Rat
<b>Source</b>	E.coli
<b>ProteinLength</b>	Met132~Thr356
<b>Description</b>	This gene has been found in all vertebrate genomes sequenced to date. However, this gene has undergone a change in function in placental mammals compared to other species. Specifically, in fish, avian, and amphibian species, this gene encodes plasma membrane-bound beta-subunits of Na,K-ATPase. In placental mammals, the encoded protein interacts with the nuclear transcriptional coregulator SKIP and may be involved in the regulation of TGF-beta signaling. Two transcript variants encoding different isoforms have been found for this gene.
<b>Form</b>	Freeze-dried powder
<b>Molecular Mass</b>	Predicted Molecular Mass: 29.5kDa
<b>Endotoxin</b>	<1.0EU per 1ug (determined by the LAL method)
<b>Purity</b>	>95%

 Tel: 1-631-559-9269 1-516-512-3133

 Email: [info@creative-biomart.com](mailto:info@creative-biomart.com)  Fax: 1-631-938-8127

 45-1 Ramsey Road, Shirley, NY 11967, USA

<b>Applications</b>	SDS-PAGE; WB; ELISA; IP.
<b>Stability</b>	The thermal stability is described by the loss rate. The loss rate was determined by accelerated thermal degradation test, that is, incubate the protein at 37°C for 48h, and no obvious degradation and precipitation were observed. The loss rate is less than 5% within the expiration date under appropriate storage condition.
<b>Storage</b>	Avoid repeated freeze/thaw cycles. Store at 2-8°C for one month. Aliquot and store at -80°C for 12 months.
<b>Storage buffer</b>	Supplied as lyophilized form in PBS, pH7.4, containing 5% trehalose, 0.01% sarcosyl.
<b>Reconstitution</b>	Reconstitute in sterile PBS, pH7.2-pH7.4.
<b>Isoelectric Point</b>	5.3

## GENE INFORMATION

<b>Gene Name</b>	<a href="#">ATP1B4 ATPase Na+/K+ transporting family member beta 4 [ Homo sapiens (human) ]</a>
<b>Official Symbol</b>	<a href="#">ATP1B4</a>
<b>Synonyms</b>	ATP1B4; ATPase Na+/K+ transporting family member beta 4; protein ATP1B4; ATPase, Na+/K+ transporting, beta 4 polypeptide; BetaM; Na,K-ATPase beta m-subunit; X,K-ATPase beta-m subunit; x/potassium-transporting ATPase subunit beta-m
<b>Gene ID</b>	<a href="#">23439</a>
<b>mRNA Refseq</b>	<a href="#">NM_001142447.2</a>

 Tel: 1-631-559-9269 1-516-512-3133

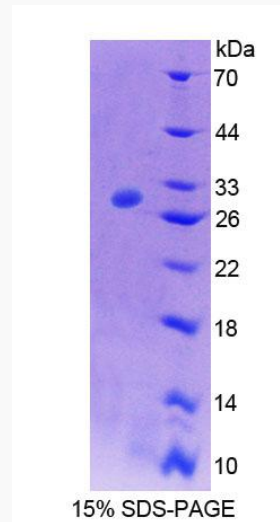
 Email: [info@creative-biomart.com](mailto:info@creative-biomart.com)  Fax: 1-631-938-8127

 45-1 Ramsey Road, Shirley, NY 11967, USA

**Protein Refseq** NP\_001135919.1

**UniProt ID** Q9R193

**SDS-PAGE**



 Tel: 1-631-559-9269 1-516-512-3133

 Email: [info@creative-biomart.com](mailto:info@creative-biomart.com)  Fax: 1-631-938-8127

 45-1 Ramsey Road, Shirley, NY 11967, USA