

Recombinant Human ATP1B4 Protein, Myc/DDK-tagged, C13 and N15-labeled

Cat. No. ATP1B4-3984H **Lot. No.** (See product label)

SPECIFICATION

Product Overview	ATP1B4 MS Standard C13 and N15-labeled recombinant protein (NP_036201) with a C-terminal MYC/DDK tag, was expressed in HEK293 cells.
Species	Human
Source	HEK293
Description	This gene has been found in all vertebrate genomes sequenced to date. However, this gene has undergone a change in function in placental mammals compared to other species. Specifically, in fish, avian, and amphibian species, this gene encodes plasma membrane-bound beta-subunits of Na,K-ATPase. In placental mammals, the encoded protein interacts with the nuclear transcriptional coregulator SKIP and may be involved in the regulation of TGF-beta signaling. Two transcript variants encoding different isoforms have been found for this gene.
Molecular Mass	40.9 kDa
AA Sequence	MRRQLRSRRAPSPFPYSYRYRLDDPDEANQNYLADEEEEEAEAEARVTVVPKSEEEE EEEEEEEEEEEEKEEEEGQGQPTGNAWWQKLQIMSEYLWDPERRMFLARTGLILLI YFFFFYASLAAVITLCMYTLFLTISPFIPTFTERVKPPGVMIRPFAHSLNFNFNVSEPDT WQHYVISLNGFLQGYNDSLQEEMNVDCPPGQYFIQDGNEDDKKACQFKRSFLKN CSGLEDPTFGYSTGQPCILLKMNRIVGRPELGPVKVSKVQRGDENDIRISISYYP ESASFDLRYYPYGGKLTHTVNYTSPLVAMHFTDVVKNQAVPVQCQLKGGKGVINDVIND

 Tel: 1-631-559-9269 1-516-512-3133

 Email: info@creative-biomart.com  Fax: 1-631-938-8127

 45-1 Ramsey Road, Shirley, NY 11967, USA

RFVGRVIFTLNIETTRTRPLEQKLISEEDLAANDILDYKDDDDKV

Purity > 80% as determined by SDS-PAGE and Coomassie blue staining

Stability Stable for 3 months from receipt of products under proper storage and handling conditions.

Storage Store at -80 centigrade. Avoid repeated freeze-thaw cycles.

Concentration 50 µg/mL as determined by BCA

Storage Buffer 100 mM glycine, 25 mM Tris-HCl, pH 7.3.

GENE INFORMATION

Gene Name [ATP1B4 ATPase Na⁺/K⁺ transporting family member beta 4 \[Homo sapiens \(human\) \]](#)

Official Symbol [ATP1B4](#)

Synonyms ATP1B4; ATPase, Na⁺/K⁺ transporting, beta 4 polypeptide; ATPase, (Na⁺)/K⁺ transporting, beta 4 polypeptide; protein ATP1B4; X,K-ATPase beta-m subunit; x/potassium-transporting ATPase subunit beta-m;

Gene ID [23439](#)

mRNA Refseq [NM_012069](#)

Protein Refseq [NP_036201](#)

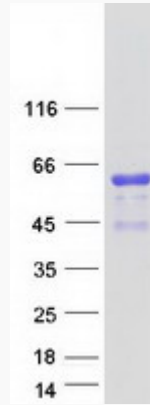
UniProt ID [Q9UN42](#)

 Tel: 1-631-559-9269 1-516-512-3133

 Email: info@creative-biomart.com  Fax: 1-631-938-8127

 45-1 Ramsey Road, Shirley, NY 11967, USA

SDS-PAGE



 Tel: 1-631-559-9269 1-516-512-3133

 Email: info@creative-biomart.com  Fax: 1-631-938-8127

 45-1 Ramsey Road, Shirley, NY 11967, USA