

## Recombinant Human ATP2A2 protein, GST-tagged

Cat. No. ATP2A2-970H Lot. No. (See product label)

### SPECIFICATION

<b>Product Overview</b>	Human ATP2A2 full-length ORF ( NP_001672.1, 1 a.a. - 997 a.a.) recombinant protein with GST-tag at N-terminal.
<b>Species</b>	Human
<b>Source</b>	Wheat Germ
<b>Description</b>	This gene encodes one of the SERCA Ca(2+)-ATPases, which are intracellular pumps located in the sarcoplasmic or endoplasmic reticula of muscle cells. This enzyme catalyzes the hydrolysis of ATP coupled with the translocation of calcium from the cytosol into the sarcoplasmic reticulum lumen, and is involved in regulation of the contraction/relaxation cycle. Mutations in this gene cause Darier-White disease, also known as keratosis follicularis, an autosomal dominant skin disorder characterized by loss of adhesion between epidermal cells and abnormal keratinization. Alternative splicing results in multiple transcript variants encoding different isoforms. [provided by RefSeq, Oct 2008]
<b>Molecular Mass</b>	136.1 kDa
<b>AA Sequence</b>	MENAHTKTVEEVVLGHFGVNESTGLSLEQVKKLKERWGSNELPAEEGKTLLELVIEQF EDLLVRILLLAACISFVLAWFEEGEEETITAFVVEPFVILLILVANAIVGVWQERNAENAIEA LKEYEPEMGKVYRQDRKSVQRIKAKDIVPGDIVEIAVGDKVPADIRLTSIKSTTLRVDQ SILTGESVSVIKHTDPVPDPRAVNQDKKNMLFSGTNIAAGKAMGVVVATGVNTEIGKI RDEMVAEQERTPLQQKLDEFGEQLSKVISLICIAVWIINIGHFNDPVHGGSWIRGAIY

 Tel: 1-631-559-9269 1-516-512-3133

 Email: [info@creative-biomart.com](mailto:info@creative-biomart.com)  Fax: 1-631-938-8127

 45-1 Ramsey Road, Shirley, NY 11967, USA

YFKIAVALAVAAIPEGLPAVITTCLALGTRRMAKKNNAIVRSLPSVETLGCTSVICSDKT  
 GTLTTNQMSVCRMFILDRVEGDTCSLNEFTITGSTYAPIGEVHKDDKPVNCHQYDGL  
 VELATICALCNDSDALDYNEAKGVYEKVGAEATETALTCLVEKMNVDTELKGLSKIERA  
 NACNSVIKQLMKKEFTLEFSRDRKSMSVYCTPNKPSRTSMKMFVKGAPEGVIDRC  
 THIRVGSTKVPMTSGVKQKIMSVIREWGS GSDTLRCLALATHDNPLRREEMHLEDS  
 ANFIKYETNLTFVGCVGM LDPRIEVASSVKLCRQAGIRVIMITGDNKGTAVAICRRIG  
 IFGQDEDVTSKAFTGREFDELNPSAQRDA CLNARCFARVEPSHKSKIVEFLQSFDEIT  
 AMTGDGVNDAPALKKAEIGIAMGSGTAVAKTASEMVLADDFSTIVA AVEEGRAIYN  
 NMKQFIRYLISNVGEVVCIFLTAALGFPEALIPVQLLWVNLVTDGLPATALGFNPPDL  
 DIMNKPPRNPKEPLISGWLFFRYLAIGCYVGAATVGAAAWWFIAADGGPRVSFYQLS  
 HFLQCKEDNPDFEGVDCAIFESPYPM TMA LSVLVTIEMCNALNSLSENQSLLRMPP  
 WENIWLVG SICLSMSLHFLILYVEPLPLIFQITPLNVTQWLMVLKISLPVILMDETLKFV  
 ARNYLEPAILE

**Applications**

Enzyme-linked Immunoabsorbent Assay; Western Blot (Recombinant protein);  
 Antibody Production; Protein Array

**Notes**

Best use within three months from the date of receipt of this protein.

**Storage**

Store at -80 centigrade. Aliquot to avoid repeated freezing and thawing.

**Storage Buffer**

50 mM Tris-HCl, 10 mM reduced Glutathione, pH=8.0 in the elution buffer.

## GENE INFORMATION

**Gene Name**

ATP2A2 ATPase sarcoplasmic/endoplasmic reticulum Ca<sup>2+</sup> transporting 2 [ Homo sapiens (human) ]

**Official Symbol**

ATP2A2

**Synonyms**

ATP2A2; ATPase sarcoplasmic/endoplasmic reticulum Ca<sup>2+</sup> transporting 2; DD;

 Tel: 1-631-559-9269 1-516-512-3133

 Email: [info@creative-biomart.com](mailto:info@creative-biomart.com)  Fax: 1-631-938-8127

 45-1 Ramsey Road, Shirley, NY 11967, USA

DAR; ATP2B; SERCA2; sarcoplasmic/endoplasmic reticulum calcium ATPase 2; ATPase Ca<sup>++</sup> transporting cardiac muscle slow twitch 2; ATPase, Ca<sup>++</sup> dependent, slow-twitch, cardiac muscle-2; SR Ca(2+)-ATPase 2  
 calcium pump 2; calcium-transporting ATPase sarcoplasmic reticulum type, slow twitch skeletal muscle isoform; cardiac Ca<sup>2+</sup> ATPase; endoplasmic reticulum class 1/2 Ca(2+) ATPase; EC 3.6.3.8

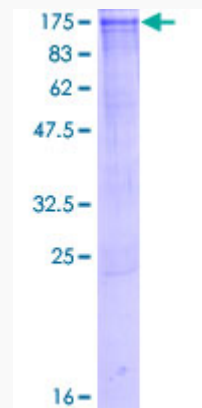
**Gene ID** 488

**mRNA Refseq** NM\_001681

**Protein Refseq** NP\_001672

**MIM** 108740

**UniProt ID** P16615



12.5% SDS-PAGE Stained with Coomassie Blue.

 Tel: 1-631-559-9269 1-516-512-3133

 Email: [info@creative-biomart.com](mailto:info@creative-biomart.com)  Fax: 1-631-938-8127

 45-1 Ramsey Road, Shirley, NY 11967, USA