

Recombinant Mouse ATP2B1 Protein, His-tagged

Cat. No. ATP2B1-11M Lot. No. (See product label)

SPECIFICATION

Product Overview	Recombinant Mouse ATP2B1 Protein, fused to His-tag, was expressed in E. coli.
Species	Mouse
Source	E.coli
Description	<p>Predicted to enable P-type calcium transporter activity involved in regulation of presynaptic cytosolic calcium ion concentration and PDZ domain binding activity. Involved in several processes, including negative regulation of cytosolic calcium ion concentration; positive regulation of bone mineralization; and regulation of vascular associated smooth muscle contraction. Located in basolateral plasma membrane and immunological synapse. Is integral component of presynaptic membrane and integral component of synaptic vesicle membrane. Is expressed in several structures, including alimentary system; central nervous system; genitourinary system; integumental system; and sensory organ. Orthologous to human ATP2B1 (ATPase plasma membrane Ca²⁺ transporting 1).</p>
Form	50mM Tris, 0.3 M NaCl, 0.05% SKL, 1mM DTT, pH9.0.
Molecular Mass	13.8 kDa
AA Sequence	<p>MGSSHHHHHSSGLVPRGSHMGDMANNSVAYSGVKNSLKEANHGDGFGITLTELRL ALMELRSTDALRKIQESYGDVYGICTKLKTSPNEGLSGNPADLERREAVFGKNFIPPK KPKTFLQLVWEA</p>

 Tel: 1-631-559-9269 1-516-512-3133

 Email: info@creative-biomart.com  Fax: 1-631-938-8127

 45-1 Ramsey Road, Shirley, NY 11967, USA

Purity	90%
Storage	Store it under sterile conditions at -20 to -80 centigrade. It is recommended that the protein be aliquoted for optimal storage. Avoid repeated freeze-thaw cycles.
Concentration	0.15 mg/ml

GENE INFORMATION

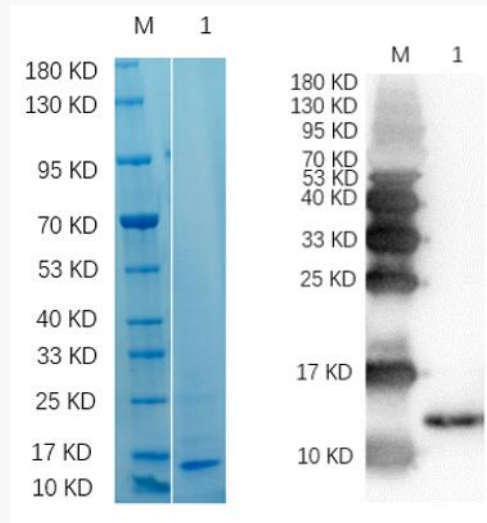
Gene Name	<i>Atp2b1</i> ATPase, Ca ⁺⁺ transporting, plasma membrane 1 [<i>Mus musculus</i> (house mouse)]
Official Symbol	ATP2B1
Synonyms	Pmca1; 2810442I22Rik; E130111D10Rik
Gene ID	67972
mRNA Refseq	NM_001359506
Protein Refseq	NP_001346435
MIM	108731
UniProt ID	G5E829

 Tel: 1-631-559-9269 1-516-512-3133

 Email: info@creative-biomart.com  Fax: 1-631-938-8127

 45-1 Ramsey Road, Shirley, NY 11967, USA

SDS-PAGE



Reducing 12% SDS-PAGE and WB analysis profile of purified ATP2B1

 Tel: 1-631-559-9269 1-516-512-3133

 Email: info@creative-biomart.com  Fax: 1-631-938-8127

 45-1 Ramsey Road, Shirley, NY 11967, USA