

Recombinant Human ATP2B1 Protein, His-tagged

Cat. No. ATP2B1-13H **Lot. No.** (See product label)

SPECIFICATION

Product Overview	Recombinant Human ATP2B1 Protein(2-89 aa), fused with N-terminal His Tag, was expressed in E.coli.
Species	Human
Source	E.coli
ProteinLength	2-89 aa
Form	The purified protein was Lyophilized from sterile PBS (58mM Na ₂ HPO ₄ , 17mM NaH ₂ PO ₄ , 68mM NaCl, pH7.4). 5 % trehalose and 5 % mannitol are added as protectant before lyophilization. The elution buffer contain 300mM imidazole.
AASequence	GDMANNSVAYSGVKNSLKEANHDGDFGITLAELRALMELRSTDALRKIQESYGDVY GICTKLKTSPNEGLSGNPADLERREAVFGKNF
Purity	85%, by SDS-PAGE with Coomassie Brilliant Blue staining.
Storage	Short-term storage: Store at 2-8°C for (1-2 weeks). Long-term storage: Aliquot and store at -20°C to -80°C for up to 12 months, reconstitution with sterile water and addition of an equal volume of glycerol. Avoid repeat freeze-thaw cycles.
Reconstitution	Reconstitute at 0.25 g/μl in 200 μl sterile water for short-term storage. After reconstitution with sterile water, if glycerol has no effect on subsequent experiments, it is recommended to add an equal volume of glycerol for long-term storage.

 Tel: 1-631-559-9269 1-516-512-3133

 Email: info@creative-biomart.com  Fax: 1-631-938-8127

 45-1 Ramsey Road, Shirley, NY 11967, USA

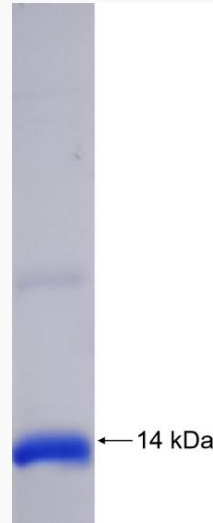
GENE INFORMATION

Gene Name	ATP2B1 ATPase, Ca ⁺⁺ transporting, plasma membrane 1 [Homo sapiens]
Official Symbol	ATP2B1
Synonyms	ATP2B1; ATPase, Ca ⁺⁺ transporting, plasma membrane 1; plasma membrane calcium-transporting ATPase 1; plasma membrane calcium transporting ATPase 1; PMCA1; plasma membrane calcium pump; PMCA1kb;
Gene ID	490
mRNA Refseq	NM_001001323
Protein Refseq	NP_001001323
MIM	108731
UniProt ID	P20020

 Tel: 1-631-559-9269 1-516-512-3133 Email: info@creative-biomart.com  Fax: 1-631-938-8127 45-1 Ramsey Road, Shirley, NY 11967, USA



SDS-PAGE



Tel: 1-631-559-9269 1-516-512-3133

Email: info@creative-biomart.com Fax: 1-631-938-8127

45-1 Ramsey Road, Shirley, NY 11967, USA