

## Recombinant Mouse ATP2B3 Protein, His-tagged

Cat. No. ATP2B3-12M Lot. No. (See product label)

### SPECIFICATION

<b>Product Overview</b>	Recombinant Mouse ATP2B3 Protein, fused to His-tag, was expressed in E. coli.
<b>Species</b>	Mouse
<b>Source</b>	E.coli
<b>Description</b>	<p>Predicted to enable P-type calcium transporter activity involved in regulation of presynaptic cytosolic calcium ion concentration and PDZ domain binding activity. Predicted to be involved in calcium ion export across plasma membrane and regulation of cytosolic calcium ion concentration. Predicted to be located in membrane raft; parallel fiber; and plasma membrane. Predicted to be active in GABA-ergic synapse; glutamatergic synapse; and intracellular membrane-bounded organelle. Predicted to be integral component of plasma membrane. Is expressed in several structures, including alimentary system; genitourinary system; nervous system; respiratory system; and sensory organ. Human ortholog(s) of this gene implicated in X-linked spinocerebellar ataxia 1. Orthologous to human ATP2B3 (ATPase plasma membrane Ca<sup>2+</sup> transporting 3).</p>
<b>Form</b>	50mM Tris 300mM NaCl, pH 8.0.
<b>Molecular Mass</b>	24.5 kDa
<b>AA Sequence</b>	<p>MGSSHHHHHHSSGLVPRGSHMQFGGKPFSCSPLSTEQWLWCLFVGVGELVWGQ VIATIPSTQLKCLKEAGHGPGKDEMTDEELAEGEEEIDHAERELRRGQILWFRGLNRI QTQIRVVKAFRSSLYEGLEKPEKSCIHNFMATPEFLINDYTHNIPLIDDDTDVDENEER</p>

 Tel: 1-631-559-9269 1-516-512-3133

 Email: [info@creative-biomart.com](mailto:info@creative-biomart.com)  Fax: 1-631-938-8127

 45-1 Ramsey Road, Shirley, NY 11967, USA

LRAPPPPPPNQNNNAIDSGIYLTTHATKSATSSAFSSRPGSPLHSMETSL

**Purity**

90%

**Storage**

Store it under sterile conditions at -20 to -80 centigrade. It is recommended that the protein be aliquoted for optimal storage. Avoid repeated freeze-thaw cycles.

**Concentration**

0.27 mg/ml

## GENE INFORMATION

**Gene Name**

Atp2b3 ATPase, Ca<sup>++</sup> transporting, plasma membrane 3 [ Mus musculus (house mouse) ]

**Official Symbol**

ATP2B3

**Synonyms**

Pmca3; 6430519O13Rik

**Gene ID**

320707

**mRNA Refseq**

NM\_177236

**Protein Refseq**

NP\_796210

**MIM**

300014

**UniProt ID**

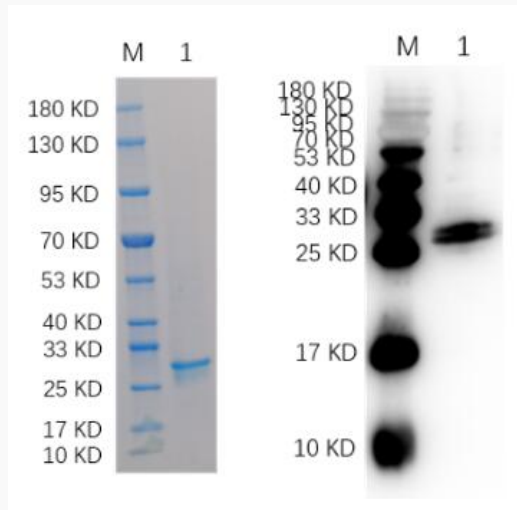
Q0VF55

 Tel: 1-631-559-9269 1-516-512-3133

 Email: [info@creative-biomart.com](mailto:info@creative-biomart.com)  Fax: 1-631-938-8127

 45-1 Ramsey Road, Shirley, NY 11967, USA

**SDS-PAGE**



Reducing 12% SDS-PAGE and WB analysis profile of purified ATP2B3.

 Tel: 1-631-559-9269 1-516-512-3133

 Email: [info@creative-biomart.com](mailto:info@creative-biomart.com)  Fax: 1-631-938-8127

 45-1 Ramsey Road, Shirley, NY 11967, USA