

Recombinant Human ATP2B4 Protein, Myc/DDK-tagged, C13 and N15-labeled

Cat. No. ATP2B4-6544H **Lot. No.** (See product label)

SPECIFICATION

Product Overview	ATP2B4 MS Standard C13 and N15-labeled recombinant protein (NP_001675) with a C-terminal MYC/DDK tag, was expressed in HEK293 cells.
Species	Human
Source	HEK293
Description	<p>The protein encoded by this gene belongs to the family of P-type primary ion transport ATPases characterized by the formation of an aspartyl phosphate intermediate during the reaction cycle. These enzymes remove bivalent calcium ions from eukaryotic cells against very large concentration gradients and play a critical role in intracellular calcium homeostasis. The mammalian plasma membrane calcium ATPase isoforms are encoded by at least four separate genes and the diversity of these enzymes is further increased by alternative splicing of transcripts. The expression of different isoforms and splice variants is regulated in a developmental, tissue- and cell type-specific manner, suggesting that these pumps are functionally adapted to the physiological needs of particular cells and tissues. This gene encodes the plasma membrane calcium ATPase isoform 4. Alternatively spliced transcript variants encoding different isoforms have been identified.</p>
Molecular Mass	133.8 kDa
AA Sequence	MTNPSDRVLPANSMAESREGDFGCTVMELRKLME LR SRDALTQINVHYGGVQNL C

 Tel: 1-631-559-9269 1-516-512-3133

 Email: info@creative-biomart.com  Fax: 1-631-938-8127

 45-1 Ramsey Road, Shirley, NY 11967, USA

SRLKTSPVEGLSGNPADLEKRRQVFGHNVIPPKPKTFLELVWEALQDVTLIILEIAAII
 SLVLSFYRPAGEENELCGQVATTPEDENEAQAGWIEGAAILFSVIIVVLVTA FN DWSK
 EKQFRGLQCRIEQEQKFSIIRNGQLIQLPVAEIVVGDIQVKYGDLLPADGILIQGNDL
 KIDESSLTGESDHVKKSLDKDPMLLSGTHVMEGSGRMVVTAVGVNSQTGIILTLLGV
 NEDDEGEK K K K G K K Q G V P E N R N K A K T Q D G V A L E I Q P L N S Q E G I D N E E K D K K A V K V P
 KKEKSVLQGKLTRLAVQIGKAGLLMSALTVFILILYFVIDNFVINRRPWLPECTPIYIQY
 FVKFFIIGITVLVVAVPEGLPLAVTISLAYSVKKMMKDNLLVRHLDACETMGNATAICS
 DKTGTLTMNRMTVVQAYIGGIHYRQIPSPDVFLPKVLDLIVNGISINSAYTSKILPPEKE
 GGLPRQVGNKTECALLGFVTDLKQDYQAVRNEVP E E K L Y K V Y T F N S V R K S M S T V I R
 NPNGGFRMYSKGASEIILRKCNRILDRKGEAVPFKNKDRDDMVRTVIEPMACDGLRT
 ICIA Y R D F D D T E P S W D N E N E I L T E L T C I A V V G I E D P V R P E V P D A I A K C K Q A G I T V R M V T
 GDNINTARAIATKCGILTPGDDFLCLEGKEFNRLIRNEKGEVEQEKLDKIWPKLRVLA
 RSSPTDKHTLVKGIIDSTVGEHRQVVAVTGDGTNDGPALKKADVGFAMGIAGTDVAK
 EASDIILTDNFTSIVKAVMWGRNVYDSISKFLQFQLTVNVVAVIVAFTGACITQD SPL
 KAVQMLWVNLIMDTFASLALATEPPTESLLKRRPYGRNKPLISRTMMKNILGHAFYQ
 LIVIFILVFAGEKFFDIDSGRKAPLHSPPSQHYTIVFNTFVLMQLFNEINSRKIHGEKNV
 FSGIYRNIIFCSVVLGTFICQIFIVEFGGKPF S C T S L S L S Q W L W C L F I G I G E L L W G Q F I S
 AIPTRSLKFLKEAGHGTTKEEITKDAEGLDEIDHAEMELRRGQILWFRGLNRIQTQIKV
 VKAFHSSLHESIQKPYNQKSIHSFMTHPEFAIEEELPRTPLLDEEEEEENPDKASKFGT
 RVLLLDGEVTPYANTNNNAVDCNQQVQLPQSDSSLQSLETSVTRTRPLEQKLI SEEDL
 AANDILDYKDDDDKV

Purity > 80% as determined by SDS-PAGE and Coomassie blue staining

Stability Stable for 3 months from receipt of products under proper storage and handling conditions.

Storage Store at -80 centigrade. Avoid repeated freeze-thaw cycles.

Concentration 50 µg/mL as determined by BCA

 Tel: 1-631-559-9269 1-516-512-3133

 Email: info@creative-biomart.com  Fax: 1-631-938-8127

 45-1 Ramsey Road, Shirley, NY 11967, USA

Storage Buffer 100 mM glycine, 25 mM Tris-HCl, pH 7.3.

GENE INFORMATION

Gene Name [ATP2B4 ATPase plasma membrane Ca²⁺ transporting 4 \[Homo sapiens \(human\) \]](#)

Official Symbol [ATP2B4](#)

Synonyms ATP2B4; ATPase, Ca⁺⁺ transporting, plasma membrane 4; ATP2B2, matrix remodelling associated 1, MXRA1; plasma membrane calcium-transporting ATPase 4; plasma membrane calcium transporting ATPase 4; PMCA4; sarcolemmal calcium pump; matrix-remodeling-associated protein 1; MXRA1; ATP2B2; PMCA4b; PMCA4x; DKFZp686M088; DKFZp686G08106;

Gene ID [493](#)

mRNA Refseq [NM_001684](#)

Protein Refseq [NP_001675](#)

MIM [108732](#)

UniProt ID [P23634](#)

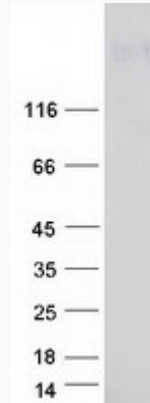
 Tel: 1-631-559-9269 1-516-512-3133

 Email: info@creative-biomart.com  Fax: 1-631-938-8127

 45-1 Ramsey Road, Shirley, NY 11967, USA



SDS-PAGE



☎ Tel: 1-631-559-9269 1-516-512-3133

☎ Email: info@creative-biomart.com ☎ Fax: 1-631-938-8127

☎ 45-1 Ramsey Road, Shirley, NY 11967, USA