

Recombinant Human ATP4A protein, His&Myc-tagged

Cat. No. ATP4A-3343H Lot. No. (See product label)

SPECIFICATION

Product Overview	Recombinant Human ATP4A protein(P20648)(350-783aa), fused with N-terminal His tag and C-terminal Myc tag, was expressed in E.coli.
Species	Human
Source	E.coli
ProteinLength	350-783aa
Form	If the delivery form is liquid, the default storage buffer is Tris/PBS-based buffer, 5%-50% glycerol. If the delivery form is lyophilized powder, the buffer before lyophilization is Tris/PBS-based buffer, 6% Trehalose, pH 8.0.
Molecular Mass	54.6 kDa
Purity	Greater than 85% as determined by SDS-PAGE.
Storage	Store at -20°C/-80°C upon receipt, aliquoting is necessary for mutiple use. Avoid repeated freeze-thaw cycles.
Reconstitution	We recommend that this vial be briefly centrifuged prior to opening to bring the contents to the bottom. Please reconstitute protein in deionized sterile water to a concentration of 0.1-1.0 mg/mL. We recommend to add 5-50% of glycerol (final concentration) and aliquot for long-term storage at -20°C/-80°C.

 Tel: 1-631-559-9269 1-516-512-3133

 Email: info@creative-biomart.com  Fax: 1-631-938-8127

 45-1 Ramsey Road, Shirley, NY 11967, USA

AA Sequence

TVTVCLSLTAKRLASKNCVVKNLEAVETLGSTSVICSDKTGTLTQNRMTVSHLWFDN
 HIHTADTTEDQSGQTFDQSSETWRALCRVLTLCNRAAFKSGQDAVPVPKRIVIGDAS
 ETALLKFSELT LGNAMGYRDRFPKVCEIPFNSTNKFQLSIHTLEDPRDPRHLLVMKG
 APERVLERCSSILIKGQELPLDEQWREAFQTAYLSLGGGLGERVLGFCQLYLNEKDYP
 PGYAFDVEAMNFPSSGLCFAGLVSMIDPPRATVPDAVLKCRTAGIRVIMVTGDHPIT
 AKAIAASVGIISEGSETVEDIAARLRVPVDQVNRKDARACVINGMQLKDMDPSELVEA
 LRTHPEMV FARTSPQQKLVIVESCQRLGAIVAVTGDGVNDSPALKKADIGVAMGIAG
 SDAAKNAADMILLDDNFASIVTGVEQGRLIFDNL

GENE INFORMATION

Gene Name [ATP4A ATPase, H+/K+ exchanging, alpha polypeptide \[Homo sapiens \]](#)

Official Symbol [ATP4A](#)

Synonyms [ATP6A](#)

Gene ID [495](#)

mRNA Refseq [NM_000704.2](#)

Protein Refseq [NP_000695.2](#)

MIM [137216](#)

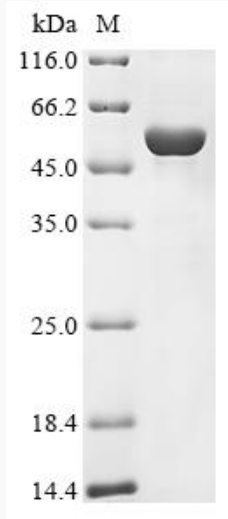
UniProt ID [P20648](#)

 Tel: 1-631-559-9269 1-516-512-3133

 Email: info@creative-biomart.com  Fax: 1-631-938-8127

 45-1 Ramsey Road, Shirley, NY 11967, USA

SDS-PAGE



 Tel: 1-631-559-9269 1-516-512-3133

 Email: info@creative-biomart.com  Fax: 1-631-938-8127

 45-1 Ramsey Road, Shirley, NY 11967, USA