

Recombinant Human ATP4B Protein (58-291 aa), His-tagged

Cat. No. ATP4B-1337H Lot. No. (See product label)

SPECIFICATION

Product Overview	Recombinant Human ATP4B Protein (58-291 aa) is produced by Yeast expression system. This protein is fused with a 6xHis tag at the N-terminal. Research Area: Transport. Protein Description: Partial.
Species	Human
Source	Yeast
ProteinLength	58-291 aa
Description	Required for stabilization and maturation of the catalytic proton pump alpha subunit and may also involved in cell adhesion and establishing epithelial cell polarity.
Form	Tris-based buffer,50% glycerol
Molecular Mass	28.6 kDa
AA Sequence	CLYVLMQTVDPYTPDYQDQLRSPGVTLRPDVYGEKGLEIVYNVSDNRTWADLTQTL HAFLAGYSPAAQEDSINCTSEQYFFQESFRAPNHTKFSCCKFTADMLQNCGLADPN FGFEEGKPCFIIKMNRIKFLPSNGSAPRVDCAFDQPRELGQPLQVKYPPNGTFS LHYFPYYGKKAQPHYSNPLVAAKLLNIPRNAEVAIVCKVMAEHVTFNPHDPYEGKV EFKLIKIEK
Purity	> 90% as determined by SDS-PAGE.

 Tel: 1-631-559-9269 1-516-512-3133

 Email: info@creative-biomart.com  Fax: 1-631-938-8127

 45-1 Ramsey Road, Shirley, NY 11967, USA

Notes	Repeated freezing and thawing is not recommended. Store working aliquots at 4 centigrade for up to one week.
Storage	The shelf life is related to many factors, storage state, buffer ingredients, storage temperature and the stability of the protein itself. Generally, the shelf life of liquid form is 6 months at -20 centigrade/-80 centigrade. The shelf life of lyophilized form is 12 months at -20 centigrade/-80 centigrade.
Concentration	A hardcopy of COA with reconstitution instruction is sent along with the products. Please refer to it for detailed information.

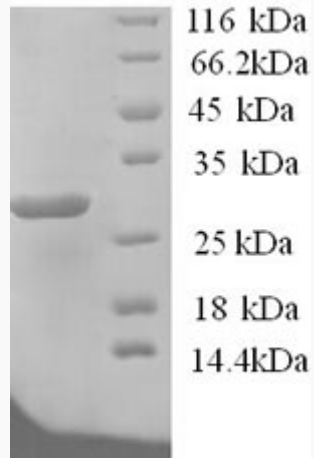
GENE INFORMATION

Gene Name	ATP4B ATPase, H+/K+ exchanging, beta polypeptide [Homo sapiens]
Official Symbol	ATP4B
Synonyms	ATP4B; ATP6B; proton pump beta chain;
Gene ID	496
mRNA Refseq	NM_000705
Protein Refseq	NP_000696
MIM	137217
UniProt ID	P51164

 Tel: 1-631-559-9269 1-516-512-3133

 Email: info@creative-biomart.com  Fax: 1-631-938-8127

 45-1 Ramsey Road, Shirley, NY 11967, USA



(Tris-Glycine gel) Discontinuous SDS-PAGE (reduced) with 5% enrichment gel and 15% separation gel.

 Tel: 1-631-559-9269 1-516-512-3133

 Email: info@creative-biomart.com  Fax: 1-631-938-8127

 45-1 Ramsey Road, Shirley, NY 11967, USA