

## Recombinant Human ATP5A1 protein, GST-tagged

Cat. No. ATP5A1-976H Lot. No. (See product label)

### SPECIFICATION

<b>Product Overview</b>	Human ATP5A1 full-length ORF ( NP_001001937.1, 1 a.a. - 553 a.a.) recombinant protein with GST-tag at N-terminal.
<b>Species</b>	Human
<b>Source</b>	Wheat Germ
<b>Description</b>	<p>This gene encodes a subunit of mitochondrial ATP synthase. Mitochondrial ATP synthase catalyzes ATP synthesis, using an electrochemical gradient of protons across the inner membrane during oxidative phosphorylation. ATP synthase is composed of two linked multi-subunit complexes: the soluble catalytic core, F1, and the membrane-spanning component, Fo, comprising the proton channel. The catalytic portion of mitochondrial ATP synthase consists of 5 different subunits (alpha, beta, gamma, delta, and epsilon) assembled with a stoichiometry of 3 alpha, 3 beta, and a single representative of the other 3. The proton channel consists of three main subunits (a, b, c). This gene encodes the alpha subunit of the catalytic core. Alternatively spliced transcript variants encoding the different isoforms have been identified. Pseudogenes of this gene are located on chromosomes 9, 2, and 16. [provided by RefSeq, Mar 2012]</p>
<b>Molecular Mass</b>	86.2 kDa
<b>AA Sequence</b>	<p>MLSVRVAAAVVRALPRRAGLVSRNALGSSFIAARNFHASNTHLQKTGTAEMSSILEE RILGADTSVDLEETGRVLSIGDGIARVHGLRNVQAEEMVEFSSGLKGM SLNLEPDNV</p>

 Tel: 1-631-559-9269 1-516-512-3133

 Email: [info@creative-biomart.com](mailto:info@creative-biomart.com)  Fax: 1-631-938-8127

 45-1 Ramsey Road, Shirley, NY 11967, USA

GVVVFQNDKLIKEGDIVKRTGAIVDVPVGEELLGRVVDALGNAIDGKGPISKTRRRV  
 GLKAPGIIPRISVREPMQTGIKAVDSLPIGRGQRELIIGDRQTGKTSIAIDTIINQKRFN  
 DGSDEKKKLYCIYVAIGQKRSTVAQLVKRLTDADAMKYTIVVSATASDAAPLQYLAPY  
 SGCSMGEYFRDNGKHALIYDDLSKQAVAYRQMSLLRRPPGREAYPGDVFYLHSR  
 LLERAAKMNDAFGGGSLTALPVIETQAGDVSAYIPTNVISITDGGIFLETIFYKIRPA  
 INVGLSVSRVGSAAQTRAMKQVAGTMKLELAQYREVAFAAQFGSDLDAATQQLLSR  
 GVRLTELLKQGQYSPMAIEEQVAVIYAGVVRGYLDKLEPSKITKFENAFLSHVVSQHQ  
 ALLGTIRADGKISEQSDAKLKEIVTNFLAGFEA

**Applications**

Enzyme-linked Immunoabsorbent Assay; Western Blot (Recombinant protein);  
 Antibody Production; Protein Array

**Notes**

Best use within three months from the date of receipt of this protein.

**Storage**

Store at -80 centigrade. Aliquot to avoid repeated freezing and thawing.

**Storage Buffer**

50 mM Tris-HCl, 10 mM reduced Glutathione, pH=8.0 in the elution buffer.

## GENE INFORMATION

**Gene Name**

ATP5A1 ATP synthase, H<sup>+</sup> transporting, mitochondrial F1 complex, alpha subunit 1,  
 cardiac muscle [ Homo sapiens ]

**Official Symbol**

ATP5A1

**Synonyms**

ATP5A1; ATP synthase, H<sup>+</sup> transporting, mitochondrial F1 complex, alpha subunit 1,  
 cardiac muscle; ATP synthase, H<sup>+</sup> transporting, mitochondrial F1 complex, alpha  
 subunit, isoform 1, cardiac muscle , ATP synthase, H<sup>+</sup> transporting, mitochondrial F1  
 complex, alpha subunit, isoform 2, non cardiac muscle like 2 , ATP5AL2, ATPM; ATP  
 synthase subunit alpha, mitochondrial; ATP5A; hATP1; OMR; ORM; ATP sythase  
 (F1-ATPase) alpha subunit; ATP synthase alpha chain, mitochondrial; mitochondrial

 Tel: 1-631-559-9269 1-516-512-3133

 Email: [info@creative-biomart.com](mailto:info@creative-biomart.com)  Fax: 1-631-938-8127

 45-1 Ramsey Road, Shirley, NY 11967, USA

ATP synthetase, oligomycin-resistant; ATP synthase, H<sup>+</sup> transporting, mitochondrial F1 complex, alpha subunit, isoform 1, cardiac muscle; ATP synthase, H<sup>+</sup> transporting, mitochondrial F1 complex, alpha subunit, isoform 2, non-cardiac muscle-like 2; ATPM; MOM2; ATP5AL2;

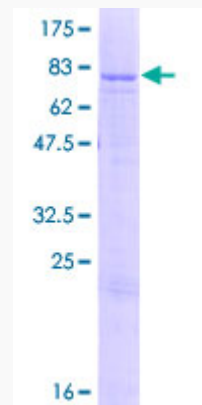
**Gene ID** 498

**mRNA Refseq** NM\_001001935

**Protein Refseq** NP\_001001935

**MIM** 164360

**UniProt ID** P25705



12.5% SDS-PAGE Stained with Coomassie Blue.

 Tel: 1-631-559-9269 1-516-512-3133

 Email: [info@creative-biomart.com](mailto:info@creative-biomart.com)  Fax: 1-631-938-8127

 45-1 Ramsey Road, Shirley, NY 11967, USA