

## Recombinant Human ATP5C1 protein, His&Myc-tagged

Cat. No. ATP5C1-1175H Lot. No. (See product label)

### SPECIFICATION

<b>Product Overview</b>	Recombinant Human ATP5C1 protein(P36542)(26-298aa), fused to N-terminal His tag and C-terminal Myc tag, was expressed in E. coli.
<b>Species</b>	Human
<b>Source</b>	E.coli
<b>ProteinLength</b>	26-298aa
<b>Form</b>	If the delivery form is liquid, the default storage buffer is Tris/PBS-based buffer, 5%-50% glycerol. If the delivery form is lyophilized powder, the buffer before lyophilization is Tris/PBS-based buffer, 6% Trehalose, pH 8.0.
<b>Molecular Mass</b>	37.6 kDa
<b>Purity</b>	Greater than 85% as determined by SDS-PAGE.
<b>Storage</b>	Store at -20°C/-80°C upon receipt, aliquoting is necessary for mutiple use. Avoid repeated freeze-thaw cycles.
<b>Reconstitution</b>	It is recommended that sterile water be added to the vial to prepare a stock solution of 0.2 ug/ul. Centrifuge the vial at 4°C before opening to recover the entire contents.

### GENE INFORMATION

 Tel: 1-631-559-9269 1-516-512-3133

 Email: [info@creative-biomart.com](mailto:info@creative-biomart.com)  Fax: 1-631-938-8127

 45-1 Ramsey Road, Shirley, NY 11967, USA

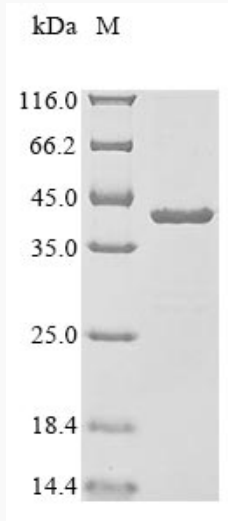
<b>Gene Name</b>	ATP5C1 ATP synthase, H <sup>+</sup> transporting, mitochondrial F1 complex, gamma polypeptide 1 [ Homo sapiens ]
<b>Official Symbol</b>	ATP5C1
<b>Synonyms</b>	ATP5C1; ATP synthase, H <sup>+</sup> transporting, mitochondrial F1 complex, gamma polypeptide 1; ATP5C, ATP5CL1; ATP synthase subunit gamma, mitochondrial; F-ATPase gamma subunit; ATP synthase gamma chain, mitochondrial; mitochondrial ATP synthase, gamma subunit 1; ATP5C; ATP5CL1;
<b>Gene ID</b>	509
<b>mRNA Refseq</b>	NM_001001973
<b>Protein Refseq</b>	NP_001001973
<b>MIM</b>	108729
<b>UniProt ID</b>	P36542

 Tel: 1-631-559-9269 1-516-512-3133

 Email: [info@creative-biomart.com](mailto:info@creative-biomart.com)  Fax: 1-631-938-8127

 45-1 Ramsey Road, Shirley, NY 11967, USA

**SDS-PAGE**



 Tel: 1-631-559-9269 1-516-512-3133

 Email: [info@creative-biomart.com](mailto:info@creative-biomart.com)  Fax: 1-631-938-8127

 45-1 Ramsey Road, Shirley, NY 11967, USA