

Recombinant Human ATP5D protein, His-tagged

Cat. No. ATP5D-979H Lot. No. (See product label)

SPECIFICATION

Product Overview Human ATP5D (NP_001678, 23 a.a. - 168 a.a.) partial recombinant protein with His tag expressed in Escherichia coli.

Species Human

Source E.coli

ProteinLength 23-168 a.a.

Description This gene encodes a subunit of mitochondrial ATP synthase. Mitochondrial ATP synthase catalyzes ATP synthesis, utilizing an electrochemical gradient of protons across the inner membrane during oxidative phosphorylation. ATP synthase is composed of two linked multi-subunit complexes: the soluble catalytic core, F1, and the membrane-spanning component, Fo, comprising the proton channel. The catalytic portion of mitochondrial ATP synthase consists of 5 different subunits (alpha, beta, gamma, delta, and epsilon) assembled with a stoichiometry of 3 alpha, 3 beta, and a single representative of the other 3. The proton channel consists of three main subunits (a, b, c). This gene encodes the delta subunit of the catalytic core. Alternatively spliced transcript variants encoding the same isoform have been identified. [provided by RefSeq, Jul 2008]

Form Liquid

Molecular Mass 17.3 kDa

 Tel: 1-631-559-9269 1-516-512-3133

 Email: info@creative-biomart.com  Fax: 1-631-938-8127

 45-1 Ramsey Road, Shirley, NY 11967, USA

AA Sequence	MGSSHHHHHSSGLVPRGSHMAEAAAAPAAASGPNQMSFTFASPTQVFFNGANV RQVDVPTLTGAFGILAHVPTLQVLRPGLVVVHAEDGTTSKYFVSSGSIAVNADSSVQ LLAEEAVTLDMLDLGAAKANLEKAQAELVGTADEATRAEIQIRIEANEALVKALE
Purity	> 95% by SDS-PAGE
Applications	SDS-PAGE
Storage	Store at 4 centigrade for 1-2 weeks. For long term storage store at -20 centigrade or -80 centigrade. Aliquot to avoid repeated freezing and thawing.
Concentration	0.25 mg/mL
Storage Buffer	In 20 mM Tris-HCl, 0.1M NaCl, pH 8.0 (20% glycerol)

GENE INFORMATION

Gene Name	ATP5D ATP synthase, H ⁺ transporting, mitochondrial F1 complex, delta subunit [Homo sapiens]
Official Symbol	ATP5D
Synonyms	ATP5D; ATP synthase, H ⁺ transporting, mitochondrial F1 complex, delta subunit; ATP synthase subunit delta, mitochondrial; F-ATPase delta subunit; mitochondrial ATP synthase, delta subunit; mitochondrial ATP synthase complex delta-subunit precursor;
Gene ID	513
mRNA Refseq	NM_001001975

 Tel: 1-631-559-9269 1-516-512-3133

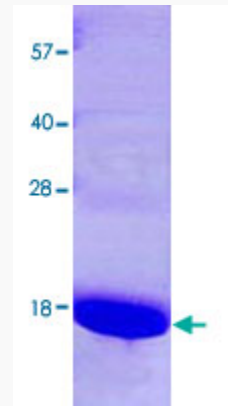
 Email: info@creative-biomart.com  Fax: 1-631-938-8127

 45-1 Ramsey Road, Shirley, NY 11967, USA

Protein Refseq NP_001001975

MIM 603150

UniProt ID P30049



Loading 3 μ g protein in 15% SDS-PAGE

 Tel: 1-631-559-9269 1-516-512-3133

 Email: info@creative-biomart.com  Fax: 1-631-938-8127

 45-1 Ramsey Road, Shirley, NY 11967, USA