

Recombinant Human ATP5E protein, GST-tagged

Cat. No. ATP5E-980H **Lot. No.** (See product label)

SPECIFICATION

Product Overview	Human ATP5E full-length ORF (AAH01690, 1 a.a. - 51 a.a.) recombinant protein with GST-tag at N-terminal.
Species	Human
Source	Wheat Germ
Description	<p>This gene encodes a subunit of mitochondrial ATP synthase. Mitochondrial ATP synthase catalyzes ATP synthesis, utilizing an electrochemical gradient of protons across the inner membrane during oxidative phosphorylation. ATP synthase is composed of two linked multi-subunit complexes: the soluble catalytic core, F1, and the membrane-spanning component, Fo, comprising the proton channel. The catalytic portion of mitochondrial ATP synthase consists of 5 different subunits (alpha, beta, gamma, delta, and epsilon) assembled with a stoichiometry of 3 alpha, 3 beta, and a single representative of the other 3. The proton channel consists of three main subunits (a, b, c). This gene encodes the epsilon subunit of the catalytic core. Two pseudogenes of this gene are located on chromosomes 4 and 13. Read-through transcripts that include exons from this gene are expressed from the upstream gene SLMO2.[provided by RefSeq, Mar 2011]</p>
Molecular Mass	31.35 kDa
AA Sequence	MVAYWRQAGLSYIRYSQICAKAVRDALKTEFKANAECTSGSNVKIVKVKKE
Applications	Enzyme-linked Immunoabsorbent Assay; Western Blot (Recombinant protein);

 Tel: 1-631-559-9269 1-516-512-3133

 Email: info@creative-biomart.com  Fax: 1-631-938-8127

 45-1 Ramsey Road, Shirley, NY 11967, USA

Antibody Production; Protein Array

Notes

Best use within three months from the date of receipt of this protein.

Storage

Store at -80 centigrade. Aliquot to avoid repeated freezing and thawing.

Storage Buffer

50 mM Tris-HCl, 10 mM reduced Glutathione, pH=8.0 in the elution buffer.

GENE INFORMATION

Gene Name

ATP5E ATP synthase, H⁺ transporting, mitochondrial F1 complex, epsilon subunit [Homo sapiens]

Official Symbol

ATP5E

Synonyms

ATP5E; ATP synthase, H⁺ transporting, mitochondrial F1 complex, epsilon subunit; ATP synthase subunit epsilon, mitochondrial; F(0)F(1)-ATPase; mitochondrial ATPase; H(+)-transporting two-sector ATPase; mitochondrial ATP synthase epsilon chain; ATPE; MC5DN3; MGC104243;

Gene ID

514

mRNA Refseq

NM_006886

Protein Refseq

NP_008817

MIM

606153

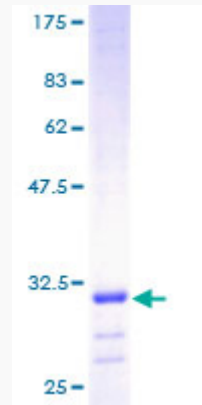
UniProt ID

P56381

 Tel: 1-631-559-9269 1-516-512-3133

 Email: info@creative-biomart.com  Fax: 1-631-938-8127

 45-1 Ramsey Road, Shirley, NY 11967, USA



12.5% SDS-PAGE Stained with Coomassie Blue.

 Tel: 1-631-559-9269 1-516-512-3133

 Email: info@creative-biomart.com  Fax: 1-631-938-8127

 45-1 Ramsey Road, Shirley, NY 11967, USA