

## Recombinant Human ATP5F1 protein, GST-tagged

**Cat. No.** ATP5F1-981H    **Lot. No.** (See product label)

### SPECIFICATION

<b>Product Overview</b>	Human ATP5F1 full-length ORF ( NP_001679.2, 1 a.a. - 256 a.a.) recombinant protein with GST-tag at N-terminal.
<b>Species</b>	Human
<b>Source</b>	Wheat Germ
<b>Description</b>	<p>This gene encodes a subunit of mitochondrial ATP synthase. Mitochondrial ATP synthase catalyzes ATP synthesis, utilizing an electrochemical gradient of protons across the inner membrane during oxidative phosphorylation. ATP synthase is composed of two linked multi-subunit complexes: the soluble catalytic core, F1, and the membrane-spanning component, Fo, comprising the proton channel. The catalytic portion of mitochondrial ATP synthase consists of 5 different subunits (alpha, beta, gamma, delta, and epsilon) assembled with a stoichiometry of 3 alpha, 3 beta, and a single representative of the other 3. The proton channel seems to have nine subunits (a, b, c, d, e, f, g, F6 and 8). This gene encodes the b subunit of the proton channel. [provided by RefSeq, Jul 2008]</p>
<b>Molecular Mass</b>	55.3 kDa
<b>AA Sequence</b>	<p>MLSRVVL SAAATAAPSLKNA AFLGPGVLQATRTFHTGQPHLVPVPPLPEYGGKVRY          GLIPEEFFQFLYPKTGVTGPYVLGTGLILYALSKEIYVISAETFTALSVLGVMMVYGIKKY          GPFVADFADKLNEQKLAQLEEAKQASIQHIQNAIDTEKSQQALVQKRHYLFDVQRNN          IMALEVITYRERLYRVYKEVKNRLDYHISVQNMMRRKEQEHMINWVEKHVVQSIST</p>

 Tel: 1-631-559-9269    1-516-512-3133

 Email: [info@creative-biomart.com](mailto:info@creative-biomart.com)     Fax: 1-631-938-8127

 45-1 Ramsey Road, Shirley, NY 11967, USA

QQEKETIAKCIADLKLLAKKAQAQPVM

**Applications**

Enzyme-linked Immunoabsorbent Assay; Western Blot (Recombinant protein); Antibody Production; Protein Array

**Notes**

Best use within three months from the date of receipt of this protein.

**Storage**

Store at -80 centigrade. Aliquot to avoid repeated freezing and thawing.

**Storage Buffer**

50 mM Tris-HCl, 10 mM reduced Glutathione, pH=8.0 in the elution buffer.

**GENE INFORMATION**

**Gene Name**

[ATP5F1 ATP synthase, H<sup>+</sup> transporting, mitochondrial Fo complex, subunit B1 \[ Homo sapiens \]](#)

**Official Symbol**

[ATP5F1](#)

**Synonyms**

ATP5F1; ATP synthase, H<sup>+</sup> transporting, mitochondrial Fo complex, subunit B1; ATP synthase, H<sup>+</sup> transporting, mitochondrial F0 complex, subunit b, isoform 1 , ATP synthase, H<sup>+</sup> transporting, mitochondrial F0 complex, subunit B1; ATP synthase subunit b, mitochondrial; ATPase subunit b; H<sup>+</sup>-ATP synthase subunit b; ATP synthase B chain, mitochondrial; cell proliferation-inducing protein 47; ATP synthase, H<sup>+</sup> transporting, mitochondrial F0 complex, subunit B1; ATP synthase, H<sup>+</sup> transporting, mitochondrial F0 complex, subunit b, isoform 1; PIG47; MGC24431;

**Gene ID**

[515](#)

**mRNA Refseq**

[NM\\_001688](#)

**Protein Refseq**

[NP\\_001679](#)

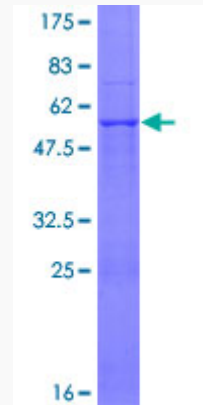
 Tel: 1-631-559-9269 1-516-512-3133

 Email: [info@creative-biomart.com](mailto:info@creative-biomart.com)  Fax: 1-631-938-8127

 45-1 Ramsey Road, Shirley, NY 11967, USA

MIM 603270

UniProt ID P24539



12.5% SDS-PAGE Stained with Coomassie Blue.

 Tel: 1-631-559-9269 1-516-512-3133

 Email: [info@creative-biomart.com](mailto:info@creative-biomart.com)  Fax: 1-631-938-8127

 45-1 Ramsey Road, Shirley, NY 11967, USA