

## Recombinant Human ATP5G2 protein, GST-tagged

Cat. No. ATP5G2-982H Lot. No. (See product label)

### SPECIFICATION

<b>Product Overview</b>	Human ATP5G2 full-length ORF ( AAH20826, 1 a.a. - 141 a.a.) recombinant protein with GST-tag at N-terminal.
<b>Species</b>	Human
<b>Source</b>	Wheat Germ
<b>Description</b>	<p>This gene encodes a subunit of mitochondrial ATP synthase. Mitochondrial ATP synthase catalyzes ATP synthesis, utilizing an electrochemical gradient of protons across the inner membrane during oxidative phosphorylation. ATP synthase is composed of two linked multi-subunit complexes: the soluble catalytic core, F1, and the membrane-spanning component, Fo, comprising the proton channel. The catalytic portion of mitochondrial ATP synthase consists of 5 different subunits (alpha, beta, gamma, delta, and epsilon) assembled with a stoichiometry of 3 alpha, 3 beta, and single representatives of the gamma, delta, and epsilon subunits. The proton channel likely has nine subunits (a, b, c, d, e, f, g, F6 and 8). There are three separate genes which encode subunit c of the proton channel and they specify precursors with different import sequences but identical mature proteins. The protein encoded by this gene is one of three precursors of subunit c. Alternatively spliced transcript variants encoding different isoforms have been identified. This gene has multiple pseudogenes. [provided by RefSeq, Jun 2010]</p>
<b>Molecular Mass</b>	41.25 kDa

 Tel: 1-631-559-9269 1-516-512-3133

 Email: [info@creative-biomart.com](mailto:info@creative-biomart.com)  Fax: 1-631-938-8127

 45-1 Ramsey Road, Shirley, NY 11967, USA

<b>AA Sequence</b>	MFACSKFVSTPSLVKSTSQLLSRPLSAVVLKRPEILTDESLSSLAVSCPLTSLVSSRS FQ TSAISR D IDTAAKFIGAGAA TVGVAGSGAGIGTVFGSLIIGYARNPSLKQQLFSYAIL GFALSEAMGLFCLMVAFLILFAM
<b>Applications</b>	Enzyme-linked Immunoabsorbent Assay; Western Blot (Recombinant protein); Antibody Production; Protein Array
<b>Notes</b>	Best use within three months from the date of receipt of this protein.
<b>Storage</b>	Store at -80 centigrade. Aliquot to avoid repeated freezing and thawing.
<b>Storage Buffer</b>	50 mM Tris-HCl, 10 mM reduced Glutathione, pH=8.0 in the elution buffer.

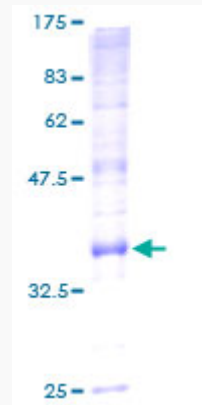
## GENE INFORMATION

<b>Gene Name</b>	ATP5G2 ATP synthase, H <sup>+</sup> transporting, mitochondrial Fo complex, subunit C2 (subunit 9) [ Homo sapiens ]
<b>Official Symbol</b>	ATP5G2
<b>Synonyms</b>	ATP5A
<b>Gene ID</b>	517
<b>mRNA Refseq</b>	NM_005176.5
<b>Protein Refseq</b>	NP_005167.2
<b>MIM</b>	603193
<b>UniProt ID</b>	Q06055

 Tel: 1-631-559-9269 1-516-512-3133

 Email: [info@creative-biomart.com](mailto:info@creative-biomart.com)  Fax: 1-631-938-8127

 45-1 Ramsey Road, Shirley, NY 11967, USA



12.5% SDS-PAGE Stained with Coomassie Blue.

 Tel: 1-631-559-9269 1-516-512-3133

 Email: [info@creative-biomart.com](mailto:info@creative-biomart.com)  Fax: 1-631-938-8127

 45-1 Ramsey Road, Shirley, NY 11967, USA