

## Recombinant Human ATP5G3 protein, GST-tagged

Cat. No. ATP5G3-983H Lot. No. (See product label)

### SPECIFICATION

<b>Product Overview</b>	Human ATP5G3 full-length ORF ( NP_001002258.1, 1 a.a. - 142 a.a.) recombinant protein with GST-tag at N-terminal.
<b>Species</b>	Human
<b>Source</b>	Wheat Germ
<b>Description</b>	<p>This gene encodes a subunit of mitochondrial ATP synthase. Mitochondrial ATP synthase catalyzes ATP synthesis, utilizing an electrochemical gradient of protons across the inner membrane during oxidative phosphorylation. ATP synthase is composed of two linked multi-subunit complexes: the soluble catalytic core, F1, and the membrane-spanning component, Fo, comprising the proton channel. The catalytic portion of mitochondrial ATP synthase consists of 5 different subunits (alpha, beta, gamma, delta, and epsilon) assembled with a stoichiometry of 3 alpha, 3 beta, and a single representative of the other 3. The proton channel seems to have nine subunits (a, b, c, d, e, f, g, F6 and 8). This gene is one of three genes that encode subunit c of the proton channel. Each of the three genes have distinct mitochondrial import sequences but encode the identical mature protein. Alternatively spliced transcript variants encoding different proteins have been identified. [provided by RefSeq, Jun 2010]</p>
<b>Molecular Mass</b>	41.1 kDa
<b>AA Sequence</b>	MFACAKLACTPSLIRAGSRVAYRPISASVLSRPEASRTGEGSTVFNGAQNGVSQLIQ

 Tel: 1-631-559-9269 1-516-512-3133

 Email: [info@creative-biomart.com](mailto:info@creative-biomart.com)  Fax: 1-631-938-8127

 45-1 Ramsey Road, Shirley, NY 11967, USA

REFQTSAISRDIDTAAKFIGAGAATVGVAGSGAGIGTVFGSLIIGYARNPSLKQQLFSY  
AILGFALSEAMGLFCLMVAFLILFAM

**Applications**

Enzyme-linked Immunoabsorbent Assay; Western Blot (Recombinant protein);  
Antibody Production; Protein Array

**Notes**

Best use within three months from the date of receipt of this protein.

**Storage**

Store at -80 centigrade. Aliquot to avoid repeated freezing and thawing.

**Storage Buffer**

50 mM Tris-HCl, 10 mM reduced Glutathione, pH=8.0 in the elution buffer.

## GENE INFORMATION

**Gene Name**

ATP5G3 ATP synthase, H<sup>+</sup> transporting, mitochondrial Fo complex, subunit C3  
(subunit 9) [ Homo sapiens ]

**Official Symbol**

ATP5G3

**Synonyms**

ATP5G3; ATP synthase, H<sup>+</sup> transporting, mitochondrial Fo complex, subunit C3  
(subunit 9); P3

**Gene ID**

518

**mRNA Refseq**

NM\_001689.4

**Protein Refseq**

NP\_001680.1

**MIM**

602736

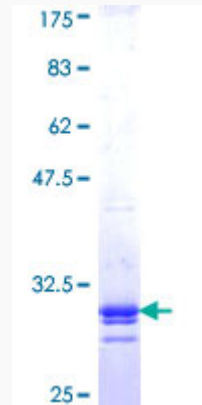
**UniProt ID**

P48201

 Tel: 1-631-559-9269 1-516-512-3133

 Email: [info@creative-biomart.com](mailto:info@creative-biomart.com)  Fax: 1-631-938-8127

 45-1 Ramsey Road, Shirley, NY 11967, USA



12.5% SDS-PAGE Stained with Coomassie Blue.

 Tel: 1-631-559-9269 1-516-512-3133

 Email: [info@creative-biomart.com](mailto:info@creative-biomart.com)  Fax: 1-631-938-8127

 45-1 Ramsey Road, Shirley, NY 11967, USA