

## Recombinant Human ATP5H protein, GST-tagged

**Cat. No.** ATP5H-985H    **Lot. No.** (See product label)

### SPECIFICATION

<b>Product Overview</b>	Human ATP5H full-length ORF ( NP_006347.1, 1 a.a. - 161 a.a.) recombinant protein with GST-tag at N-terminal.
<b>Species</b>	Human
<b>Source</b>	Wheat Germ
<b>Description</b>	Mitochondrial ATP synthase catalyzes ATP synthesis, utilizing an electrochemical gradient of protons across the inner membrane during oxidative phosphorylation. It is composed of two linked multi-subunit complexes: the soluble catalytic core, F1, and the membrane-spanning component, Fo, which comprises the proton channel. The F1 complex consists of 5 different subunits (alpha, beta, gamma, delta, and epsilon) assembled in a ratio of 3 alpha, 3 beta, and a single representative of the other 3. The Fo seems to have nine subunits (a, b, c, d, e, f, g, F6 and 8). This gene encodes the d subunit of the Fo complex. Alternatively spliced transcript variants encoding different isoforms have been identified for this gene. In addition, three pseudogenes are located on chromosomes 9, 12 and 15. [provided by RefSeq, Jun 2010]
<b>Molecular Mass</b>	44.9 kDa
<b>AA Sequence</b>	MAGRKLALKTIDWVAF AEIIPQNQKAIASSLKSWNETLTSRLAALPENPPAIDWAYYK ANVAKAGLVDDFEKKFNALKVPVPEDKYTAQVDAEEKEDVKSCAEWVSLSKARIVE YEKEMEKMKNLIPFDQMTIEDLNEAFPETKLDKKKYPYWPHQPIENL
<b>Applications</b>	Enzyme-linked Immunoabsorbent Assay; Western Blot (Recombinant protein);

 Tel: 1-631-559-9269    1-516-512-3133

 Email: [info@creative-biomart.com](mailto:info@creative-biomart.com)     Fax: 1-631-938-8127

 45-1 Ramsey Road, Shirley, NY 11967, USA

Antibody Production; Protein Array

<b>Notes</b>	Best use within three months from the date of receipt of this protein.
<b>Storage</b>	Store at -80 centigrade. Aliquot to avoid repeated freezing and thawing.
<b>Storage Buffer</b>	50 mM Tris-HCl, 10 mM reduced Glutathione, pH=8.0 in the elution buffer.

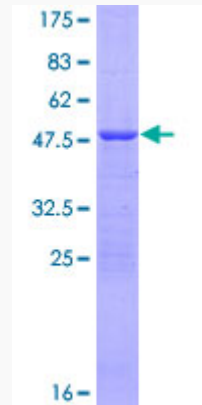
## GENE INFORMATION

<b>Gene Name</b>	ATP5H ATP synthase, H <sup>+</sup> transporting, mitochondrial Fo complex, subunit d [ Homo sapiens ]
<b>Official Symbol</b>	ATP5H
<b>Synonyms</b>	ATP5H; ATP synthase, H <sup>+</sup> transporting, mitochondrial Fo complex, subunit d; ATP synthase, H <sup>+</sup> transporting, mitochondrial F0 complex, subunit d; ATP synthase subunit d, mitochondrial; ATP5JD; ATPQ; My032 protein; ATPase subunit d; ATP synthase D chain, mitochondrial; ATP synthase, H <sup>+</sup> transporting, mitochondrial F1F0, subunit d;
<b>Gene ID</b>	10476
<b>mRNA Refseq</b>	NM_001003785
<b>Protein Refseq</b>	NP_001003785
<b>UniProt ID</b>	O75947

 Tel: 1-631-559-9269 1-516-512-3133

 Email: [info@creative-biomart.com](mailto:info@creative-biomart.com)  Fax: 1-631-938-8127

 45-1 Ramsey Road, Shirley, NY 11967, USA



12.5% SDS-PAGE Stained with Coomassie Blue.

 Tel: 1-631-559-9269 1-516-512-3133

 Email: [info@creative-biomart.com](mailto:info@creative-biomart.com)  Fax: 1-631-938-8127

 45-1 Ramsey Road, Shirley, NY 11967, USA