

## Recombinant Human ATP5J protein, GST-tagged

**Cat. No.** ATP5J-987H    **Lot. No.** (See product label)

### SPECIFICATION

<b>Product Overview</b>	Human ATP5J full-length ORF ( AAH01178, 1 a.a. - 108 a.a.) recombinant protein with GST-tag at N-terminal.
<b>Species</b>	Human
<b>Source</b>	Wheat Germ
<b>Description</b>	<p>The protein encoded by this gene belongs to the family of P-type primary ion transport ATPases characterized by the formation of an aspartyl phosphate intermediate during the reaction cycle. These enzymes remove bivalent calcium ions from eukaryotic cells against very large concentration gradients and play a critical role in intracellular calcium homeostasis. The mammalian plasma membrane calcium ATPase isoforms are encoded by at least four separate genes and the diversity of these enzymes is further increased by alternative splicing of transcripts. The expression of different isoforms and splice variants is regulated in a developmental, tissue- and cell type-specific manner, suggesting that these pumps are functionally adapted to the physiological needs of particular cells and tissues. This gene encodes the plasma membrane calcium ATPase isoform 4. Alternatively spliced transcript variants encoding different isoforms have been identified. [provided by RefSeq, Jul 2008]</p>
<b>Molecular Mass</b>	37.62 kDa
<b>AA Sequence</b>	MILQRLFRFSSVIRSAVSVHLRRNIGVTAVAFNKELDPIQKLFVDKIREYKSKRQTSGG

 Tel: 1-631-559-9269    1-516-512-3133

 Email: [info@creative-biomart.com](mailto:info@creative-biomart.com)     Fax: 1-631-938-8127

 45-1 Ramsey Road, Shirley, NY 11967, USA

PVDASSEYQQELERELFKLKQMFNGADMNTFPTFKFEDPKFEVIEKPQA

**Applications**

Enzyme-linked Immunoabsorbent Assay; Western Blot (Recombinant protein); Antibody Production; Protein Array

**Notes**

Best use within three months from the date of receipt of this protein.

**Storage**

Store at -80 centigrade. Aliquot to avoid repeated freezing and thawing.

**Storage Buffer**

50 mM Tris-HCl, 10 mM reduced Glutathione, pH=8.0 in the elution buffer.

## GENE INFORMATION

**Gene Name**

ATP5J ATP synthase, H<sup>+</sup> transporting, mitochondrial Fo complex, subunit F6 [ Homo sapiens ]

**Official Symbol**

ATP5J

**Synonyms**

ATP5J; ATP synthase, H<sup>+</sup> transporting, mitochondrial Fo complex, subunit F6; ATP synthase, H<sup>+</sup> transporting, mitochondrial F0 complex, subunit F6 , ATP5, ATP5A, ATPM; ATP synthase-coupling factor 6, mitochondrial; CF6; coupling factor 6; ATPase subunit F6; proliferation-inducing protein 36; mitochondrial ATP synthase, subunit F6; mitochondrial ATPase coupling factor 6; mitochondrial ATP synthase, coupling factor 6; ATP synthase, H<sup>+</sup> transporting, mitochondrial F0 complex, subunit F6; F6; ATP5; ATPM; ATP5A;

**Gene ID**

522

**mRNA Refseq**

NM\_001003696

**Protein Refseq**

NP\_001003696

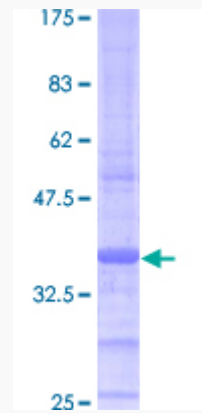
 Tel: 1-631-559-9269 1-516-512-3133

 Email: [info@creative-biomart.com](mailto:info@creative-biomart.com)  Fax: 1-631-938-8127

 45-1 Ramsey Road, Shirley, NY 11967, USA

MIM 603152

UniProt ID P18859



12.5% SDS-PAGE Stained with Coomassie Blue.

Tel: 1-631-559-9269 1-516-512-3133

Email: [info@creative-biomart.com](mailto:info@creative-biomart.com) Fax: 1-631-938-8127

45-1 Ramsey Road, Shirley, NY 11967, USA