

Recombinant Human ATP5O protein, GST-tagged

Cat. No. ATP5O-989H Lot. No. (See product label)

SPECIFICATION

Product Overview	Human ATP5O full-length ORF (AAH21233, 1 a.a. - 213 a.a.) recombinant protein with GST-tag at N-terminal.
Species	Human
Source	Wheat Germ
Description	The protein encoded by this gene is a component of the F-type ATPase found in the mitochondrial matrix. F-type ATPases are composed of a catalytic core and a membrane proton channel. The encoded protein appears to be part of the connector linking these two components and may be involved in transmission of conformational changes or proton conductance. [provided by RefSeq, Jul 2008]
Molecular Mass	49.17 kDa
AA Sequence	MAAPAVSGLSRQVRCLSTSVVRPFAKLVRPPVQVYGIEGRYATALYSAASKQNKLE QVEKELLRVAQILKEPKVAASVLNPNVVKRSIKVKSLNDITAKERFSPLTTNLINLLAEN GRLSNTQGVVSAFSTMMSVHRGEVPCTVTSASPLEEATLSELKTVLKSFLSQGQVL KLEAKTDPSILGGMIVRIGEKYVDMSVKTKIQKLGRAMREIV
Applications	Enzyme-linked Immunoabsorbent Assay; Western Blot (Recombinant protein); Antibody Production; Protein Array
Notes	Best use within three months from the date of receipt of this protein.

 Tel: 1-631-559-9269 1-516-512-3133

 Email: info@creative-biomart.com  Fax: 1-631-938-8127

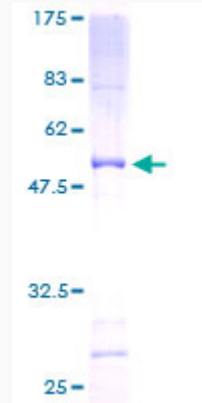
 45-1 Ramsey Road, Shirley, NY 11967, USA

Storage	Store at -80 centigrade. Aliquot to avoid repeated freezing and thawing.
Storage Buffer	50 mM Tris-HCl, 10 mM reduced Glutathione, pH=8.0 in the elution buffer.
GENE INFORMATION	
Gene Name	ATP5O ATP synthase, H ⁺ transporting, mitochondrial F1 complex, O subunit [Homo sapiens]
Official Symbol	ATP5O
Synonyms	ATP5O; ATP synthase, H ⁺ transporting, mitochondrial F1 complex, O subunit; ATP synthase subunit O, mitochondrial; ATPO; oligomycin sensitivity conferring protein; OSCP; human ATP synthase OSCP subunit; oligomycin sensitivity conferral protein;
Gene ID	539
mRNA Refseq	NM_001697
Protein Refseq	NP_001688
MIM	600828
UniProt ID	P48047

 Tel: 1-631-559-9269 1-516-512-3133

 Email: info@creative-biomart.com  Fax: 1-631-938-8127

 45-1 Ramsey Road, Shirley, NY 11967, USA



12.5% SDS-PAGE Stained with Coomassie Blue.

Tel: 1-631-559-9269 1-516-512-3133

Email: info@creative-biomart.com Fax: 1-631-938-8127

45-1 Ramsey Road, Shirley, NY 11967, USA