

Recombinant Human ATP6AP2 protein, GST-tagged

Cat. No. ATP6AP2-993H Lot. No. (See product label)

SPECIFICATION

Product Overview	Human ATP6AP2 full-length ORF (NP_005756.2, 1 a.a. - 350 a.a.) recombinant protein with GST-tag at N-terminal.
Species	Human
Source	Wheat Germ
Description	<p>This gene encodes a protein that is associated with adenosine triphosphatases (ATPases). Proton-translocating ATPases have fundamental roles in energy conservation, secondary active transport, acidification of intracellular compartments, and cellular pH homeostasis. There are three classes of ATPases- F, P, and V. The vacuolar (V-type) ATPases have a transmembrane proton-conducting sector and an extramembrane catalytic sector. The encoded protein has been found associated with the transmembrane sector of the V-type ATPases. [provided by RefSeq, Jul 2008]</p>
Molecular Mass	65.4 kDa
AA Sequence	<pre>MAVFVLLALVAGVLGNEFSILKSPGSSVFRNGNWPIPGERIPDVAALSMGFVSKED LSWPGLAVGNLFHRPRATVMVMVKGVNKLALPPGGSVISYPLENAVPFSLDSVANSIH SLFSEETPVVLQLAPSEERVYMGKANSVFEDLSVTLRQLRNRLFQENSVLSSLPLN SLSRNNEVDLLFLSELQVLHDISSLLSRHKHLAKDHSPDLYSLELAGLDEIGKRYGED SEQFRDASKILVDALQKFADDMYSLYGGNAVVELVTVKSFDLSLIRKTRTILEAKQAK NPASPYNLAYKYNFEYSVVFNMVLWIMIALALAVIITSYNIWNMDPGYDSIIYRMTNQK IRMD</pre>

 Tel: 1-631-559-9269 1-516-512-3133

 Email: info@creative-biomart.com  Fax: 1-631-938-8127

 45-1 Ramsey Road, Shirley, NY 11967, USA

Applications	Enzyme-linked Immunoabsorbent Assay; Western Blot (Recombinant protein); Antibody Production; Protein Array
Notes	Best use within three months from the date of receipt of this protein.
Storage	Store at -80 centigrade. Aliquot to avoid repeated freezing and thawing.
Storage Buffer	50 mM Tris-HCl, 10 mM reduced Glutathione, pH=8.0 in the elution buffer.
GENE INFORMATION	
Gene Name	ATP6AP2 ATPase, H+ transporting, lysosomal accessory protein 2 [Homo sapiens]
Official Symbol	ATP6AP2
Synonyms	ATP6AP2; ATPase, H+ transporting, lysosomal accessory protein 2; ATP6IP2, ATPase, H+ transporting, lysosomal interacting protein 2; renin receptor; APT6M8 9; ATP6M8 9; M8 9; N14F; V-ATPase M8.9 subunit; renin/prorenin receptor; ER-localized type I transmembrane adaptor; embryonic liver differentiation factor 10; ATPase H(+)-transporting lysosomal-interacting protein 2; ATPase, H+ transporting, lysosomal interacting protein 2; vacuolar ATP synthase membrane sector-associated protein M8-9; vacuolar proton ATP synthase membrane sector associated protein M8-9; ATPase, H+ transporting, lysosomal (vacuolar proton pump) membrane sector associated protein M8-9; M8-9; MRXE; XMRE; HT028; ELDF10; ATP6IP2; MSTP009; APT6M8-9; ATP6M8-9; MGC99577;
Gene ID	10159
mRNA Refseq	NM_005765
Protein Refseq	NP_005756

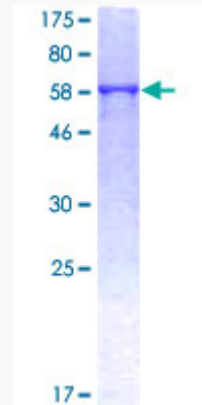
 Tel: 1-631-559-9269 1-516-512-3133

 Email: info@creative-biomart.com  Fax: 1-631-938-8127

 45-1 Ramsey Road, Shirley, NY 11967, USA

MIM 300556

UniProt ID O75787



12.5% SDS-PAGE Stained with Coomassie Blue.

Tel: 1-631-559-9269 1-516-512-3133

Email: info@creative-biomart.com Fax: 1-631-938-8127

45-1 Ramsey Road, Shirley, NY 11967, USA