

Recombinant Human ATP6V0A1 protein, GST-tagged

Cat. No. ATP6V0A1-994H **Lot. No.** (See product label)

SPECIFICATION

Product Overview	Human ATP6V0A1 full-length ORF (NP_005168.2, 1 a.a. - 831 a.a.) recombinant protein with GST-tag at N-terminal.
Species	Human
Source	Wheat Germ
Description	<p>This gene encodes a component of vacuolar ATPase (V-ATPase), a multisubunit enzyme that mediates acidification of eukaryotic intracellular organelles. V-ATPase dependent organelle acidification is necessary for such intracellular processes as protein sorting, zymogen activation, receptor-mediated endocytosis, and synaptic vesicle proton gradient generation. V-ATPase is composed of a cytosolic V1 domain and a transmembrane V0 domain. The V1 domain consists of three A and three B subunits, two G subunits plus the C, D, E, F, and H subunits. The V1 domain contains the ATP catalytic site. The V0 domain consists of five different subunits: a, c, c', c'', and d. Additional isoforms of many of the V1 and V0 subunit proteins are encoded by multiple genes or alternatively spliced transcript variants. This gene encodes one of three A subunit proteins and the encoded protein is associated with clathrin-coated vesicles. Three transcript variants encoding different isoforms have been found for this gene. [provided by RefSeq, Jul 2008]</p>
Molecular Mass	122.2 kDa
AA Sequence	MGELFRSEEMTLAQLFLQSEAAAYCCVSELGELGKVQFRDLNPDVNVFQRKVFNEVR

 Tel: 1-631-559-9269 1-516-512-3133

 Email: info@creative-biomart.com  Fax: 1-631-938-8127

 45-1 Ramsey Road, Shirley, NY 11967, USA

RCEEMDRKLRFVEKEIRKANIPIMDTGENPEVPFPRDMIDLEANFEKIENELKEINTNQ
 EALKRNFLELTELFILRKTQQFFDEMADPDLLESSSLLEPSEMGRGTPLRLGFVA
 GVINRERIPTFERMLWRVCRGNVFLRQAEIENPLEDPVTGDYVHKSVFIFFQGDQLK
 NRVKKICEGFRASLYPCPETPQERKEMASGVNTRIDDLQMVLNQTEDHRQRVLQAA
 AKNIRVWFIKVRKMKAIYHTLNLNIDVTQKCLIAEVWCPVTDLDSIQFALRRGTEHS
 GSTVPSILNRMQTNQTPPTYNKTNFTYGFQNVDAYGIGTYREINPAPYTIITFPFLF
 AVMFQDFGHGILMTLFAVWMLRESRILSQKNENEMFSTVFSGRYIILLMGVFSMYT
 GLIYNDCFSKSLNIFGSSWSVRPMFTYNWTEETLRGNPVLQNLNLPALPGVFGGPYPF
 GIDPIWNIATNKLTFNLSFKMKMSVILGIIHMLFGVSLSLFNHIYFKKPLNIYFGFIPEIIF
 MTSLFGYLVILIFYKWTAYDAHTSENAPSLLIHFINMFLFSYPESGYSMLYSGQKGIQC
 FLVVVALLCVPWMLLFKPLVLRQYLRRKHLGTLNFGGIRVGNGPTEEDAEIIQHDQL
 STHSEDADEFDFGDTMVHQAIHTIEYCLGCISNTASYLRLWALS LAHAQLSEVLWTM
 VIHIGLSVKSLAGGLVLFFFATAFATLTVAILLIMEGLSAFLHALRLHWVEFQNKFYSGT
 GFKFLPFSFEHIREGKFEE

Applications

Enzyme-linked Immunoabsorbent Assay; Western Blot (Recombinant protein);
 Antibody Production; Protein Array

Notes

Best use within three months from the date of receipt of this protein.

Storage

Store at -80 centigrade. Aliquot to avoid repeated freezing and thawing.

Storage Buffer

50 mM Tris-HCl, 10 mM reduced Glutathione, pH=8.0 in the elution buffer.

GENE INFORMATION

Gene Name

[ATP6V0A1](#) ATPase, H⁺ transporting, lysosomal V0 subunit a1 [[Homo sapiens](#)]

Official Symbol

[ATP6V0A1](#)

Synonyms

ATP6V0A1; ATPase, H⁺ transporting, lysosomal V0 subunit a1; ATP6N1, ATP6N1A,

 Tel: 1-631-559-9269 1-516-512-3133

 Email: info@creative-biomart.com  Fax: 1-631-938-8127

 45-1 Ramsey Road, Shirley, NY 11967, USA

ATPase, H⁺ transporting, lysosomal (vacuolar proton pump) non catalytic accessory protein 1A (110/116kD) , ATPase, H⁺ transporting, lysosomal V0 subunit a isoform 1 , ATPase, H⁺ transporting, lysosomal V0 subunit A1 , VPP1; V-type proton ATPase 116 kDa subunit a isoform 1; a1; Stv1; Vph1; V-ATPase 116 kDa; vacuolar proton pump subunit 1; vacuolar proton pump, subunit 1; V-type proton ATPase 116 kDa subunit a; vacuolar-type H(+)-ATPase 115 kDa subunit; vacuolar adenosine triphosphatase subunit Ac116; vacuolar proton translocating ATPase 116 kDa subunit A; H(+)-transporting two-sector ATPase, 116 kDa accessory protein A1; clathrin-coated vesicle/synaptic vesicle proton pump 116 kDa subunit; ATPase, H⁺ transporting, lysosomal non-catalytic accessory protein 1 (110/116kD); ATPase, H⁺ transporting, lysosomal (vacuolar proton pump) non-catalytic accessory protein 1A (110/116kD); VPP1; ATP6N1; ATP6N1A; DKFZp781J1951;

Gene ID [535](#)

mRNA Refseq [NM_001130020](#)

Protein Refseq [NP_001123492](#)

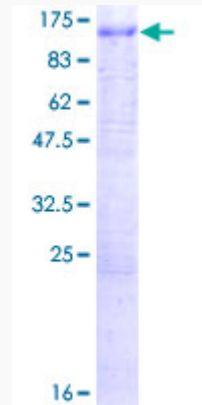
MIM [192130](#)

UniProt ID [Q93050](#)

 Tel: 1-631-559-9269 1-516-512-3133

 Email: info@creative-biomart.com  Fax: 1-631-938-8127

 45-1 Ramsey Road, Shirley, NY 11967, USA



12.5% SDS-PAGE Stained with Coomassie Blue.

 Tel: 1-631-559-9269 1-516-512-3133

 Email: info@creative-biomart.com  Fax: 1-631-938-8127

 45-1 Ramsey Road, Shirley, NY 11967, USA