

Recombinant Full Length Human ATP6V0C Protein, C-Flag-tagged

Cat. No. ATP6V0C-2129HFL **Lot. No.** (See product label)

SPECIFICATION

Product Overview	Recombinant Full Length Human ATP6V0C Protein, fused to Flag-tag at C-terminus, was expressed in Mammalian cells.
Species	Human
Source	Mammalian Cells
Description	<p>This gene encodes a component of vacuolar ATPase (V-ATPase), a multisubunit enzyme that mediates acidification of eukaryotic intracellular organelles. V-ATPase dependent organelle acidification is necessary for such intracellular processes as protein sorting, zymogen activation, receptor-mediated endocytosis, and synaptic vesicle proton gradient generation. V-ATPase is composed of a cytosolic V1 domain and a transmembrane V0 domain. The V1 domain consists of three A and three B subunits, two G subunits plus the C, D, E, F, and H subunits. The V1 domain contains the ATP catalytic site. The V0 domain consists of five different subunits: a, c, c', c'', and d. This gene encodes the V0 subunit c. Alternative splicing results in transcript variants. Pseudogenes have been identified on chromosomes 6 and 17.</p>
Form	25 mM Tris HCl, pH 7.3, 100 mM glycine, 10% glycerol.
Molecular Mass	15.6 kDa
AA Sequence	MSEKSGPEYASFFAVMGASAAMVFSALGAAYGTAKSGTGIAAMSVMRPEQIMKSII PVVMAGIIAIYGL VVAVLIANSLNDDISLYKSFLQLGAGLSVGLSGLAAGFAIGIVGDA

 Tel: 1-631-559-9269 1-516-512-3133

 Email: info@creative-biomart.com  Fax: 1-631-938-8127

 45-1 Ramsey Road, Shirley, NY 11967, USA

GVRGTAQQPRLFVGMILILIFAEV LGLYGLIVALILSTK TRTRPLEQKLISEEDLAANDI
LDYKDDDDKV

Purity	> 80% as determined by SDS-PAGE and Coomassie blue staining.
Stability	Stable for 12 months from the date of receipt of the product under proper storage and handling conditions. Avoid repeated freeze-thaw cycles.
Storage	Store at -80 centigrade.
Concentration	>50 ug/mL as determined by microplate BCA method.
Preparation	Recombinant protein was captured through anti-DDK affinity column followed by conventional chromatography steps.
Protein Families	Transmembrane
Protein Pathways	Epithelial cell signaling in Helicobacter pylori infection, Lysosome, Metabolic pathways, Oxidative phosphorylation, Vibrio cholerae infection
Full Length	Full L.

GENE INFORMATION

Gene Name	ATP6V0C ATPase H ⁺ transporting V0 subunit c [Homo sapiens (human)]
Official Symbol	ATP6V0C
Synonyms	ATPL; VATL; VPPC; Vma3; ATP6C; ATP6L
Gene ID	527

 Tel: 1-631-559-9269 1-516-512-3133

 Email: info@creative-biomart.com  Fax: 1-631-938-8127

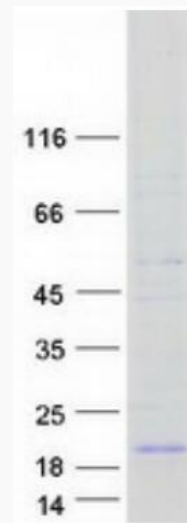
 45-1 Ramsey Road, Shirley, NY 11967, USA

mRNA Refseq	NM_001694.4
-------------	-------------

Protein Refseq	NP_001685.1
----------------	-------------

MIM	108745
-----	--------

UniProt ID	P27449
------------	--------



Coomassie blue staining of purified ATP6V0C protein.

 Tel: 1-631-559-9269 1-516-512-3133

 Email: info@creative-biomart.com  Fax: 1-631-938-8127

 45-1 Ramsey Road, Shirley, NY 11967, USA