

## Recombinant Human ATP6V0C protein, GST-tagged

**Cat. No.** ATP6V0C-996H    **Lot. No.** (See product label)

### SPECIFICATION

**Product Overview**      Human ATP6V0C full-length ORF ( NP\_001685.1, 1 a.a. - 155 a.a.) recombinant protein with GST-tag at N-terminal.

**Species**                      Human

**Source**                        Wheat Germ


**Description**

This gene encodes a component of vacuolar ATPase (V-ATPase), a multisubunit enzyme that mediates acidification of eukaryotic intracellular organelles. V-ATPase dependent organelle acidification is necessary for such intracellular processes as protein sorting, zymogen activation, receptor-mediated endocytosis, and synaptic vesicle proton gradient generation. V-ATPase is composed of a cytosolic V1 domain and a transmembrane V0 domain. The V1 domain consists of three A and three B subunits, two G subunits plus the C, D, E, F, and H subunits. The V1 domain contains the ATP catalytic site. The V0 domain consists of five different subunits: a, c, c', c'', and d. This gene encodes the V0 subunit c. Alternative splicing results in transcript variants. Pseudogenes have been identified on chromosomes 6 and 17. [provided by RefSeq, Nov 2010]


**Molecular Mass**            42.1 kDa

**AA Sequence**

MSEKSGPEYASFFAVMGASAAMVFSALGAAYGTAKSGTGIAAMSVMRPEQIMKSII  
 PVVMAGIIAIYGLVVAVLIANSLNDDISLYKSFLQLGAGLSVGLSGLAAGFAIGIVGDAG  
 VRGTAQQPRLFVGMILILIFAEVLGLYGLIVALILSTK

 Tel: 1-631-559-9269    1-516-512-3133


 Email: [info@creative-biomart.com](mailto:info@creative-biomart.com)     Fax: 1-631-938-8127

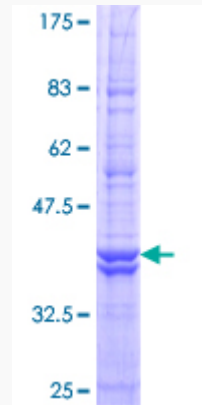
 45-1 Ramsey Road, Shirley, NY 11967, USA

<b>Applications</b>	Enzyme-linked Immunoabsorbent Assay; Western Blot (Recombinant protein); Antibody Production; Protein Array
<b>Notes</b>	Best use within three months from the date of receipt of this protein.
<b>Storage</b>	Store at -80 centigrade. Aliquot to avoid repeated freezing and thawing.
<b>Storage Buffer</b>	50 mM Tris-HCl, 10 mM reduced Glutathione, pH=8.0 in the elution buffer.
<b>GENE INFORMATION</b>	
<b>Gene Name</b>	ATP6V0C ATPase, H+ transporting, lysosomal 16kDa, V0 subunit c [ Homo sapiens ]
<b>Official Symbol</b>	ATP6V0C
<b>Synonyms</b>	ATP6V0C; ATPase, H+ transporting, lysosomal 16kDa, V0 subunit c; ATP6C, ATP6L, ATPase, H+ transporting, lysosomal (vacuolar proton pump) 16kD , ATPL; V-type proton ATPase 16 kDa proteolipid subunit; VATL; Vma3; V-ATPase 16 kDa proteolipid subunit; vacuolar H+ ATPase proton channel subunit; vacuolar proton pump 16 kDa proteolipid subunit; vacuolar ATP synthase 16 kDa proteolipid subunit; H(+)-transporting two-sector ATPase, 16 kDa subunit; ATPL; VPPC; ATP6C; ATP6L;
<b>Gene ID</b>	527
<b>mRNA Refseq</b>	NM_001198569
<b>Protein Refseq</b>	NP_001185498
<b>MIM</b>	108745
<b>UniProt ID</b>	P27449

 Tel: 1-631-559-9269 1-516-512-3133

 Email: [info@creative-biomart.com](mailto:info@creative-biomart.com)  Fax: 1-631-938-8127

 45-1 Ramsey Road, Shirley, NY 11967, USA



12.5% SDS-PAGE Stained with Coomassie Blue.

Tel: 1-631-559-9269 1-516-512-3133

Email: [info@creative-biomart.com](mailto:info@creative-biomart.com) Fax: 1-631-938-8127

45-1 Ramsey Road, Shirley, NY 11967, USA