

## Recombinant Human ATP6V0E protein, GST-tagged

Cat. No. ATP6V0E-999H Lot. No. (See product label)

### SPECIFICATION

<b>Product Overview</b>	Human ATP6V0E full-length ORF ( NP_003936.1, 1 a.a. - 81 a.a.) recombinant protein with GST-tag at N-terminal.
<b>Species</b>	Human
<b>Source</b>	Wheat Germ
<b>Description</b>	<p>This gene encodes a component of vacuolar ATPase (V-ATPase), a multisubunit enzyme that mediates acidification of eukaryotic intracellular organelles. V-ATPase dependent organelle acidification is necessary for such intracellular processes as protein sorting, zymogen activation, receptor-mediated endocytosis, and synaptic vesicle proton gradient generation. V-ATPase is composed of a cytosolic V1 domain and a transmembrane V0 domain. The V1 domain consists of three A and three B subunits, two G subunits plus the C, D, E, F, and H subunits. The V1 domain contains the ATP catalytic site. The V0 domain consists of five different subunits: a, c, c', c'', and d. Additional isoforms of many of the V1 and V0 subunit proteins are encoded by multiple genes or alternatively spliced transcript variants. This encoded protein is possibly part of the V0 subunit. Since two nontranscribed pseudogenes have been found in dog, it is possible that the localization to chromosome 2 for this gene by radiation hybrid mapping is representing a pseudogene. Genomic mapping puts the chromosomal location on 5q35.3. [provided by RefSeq, Jul 2008]</p>
<b>Molecular Mass</b>	35.8 kDa

 Tel: 1-631-559-9269 1-516-512-3133

 Email: [info@creative-biomart.com](mailto:info@creative-biomart.com)  Fax: 1-631-938-8127

 45-1 Ramsey Road, Shirley, NY 11967, USA

<b>AA Sequence</b>	MAYHGLTVPLIVMSVFWGFVGFVLPWFIPKGPNGVITMLVTCSVCCYLFWLIALA QLNPLFGPQLKNETIWYLKYHWP
<b>Applications</b>	Enzyme-linked Immunoabsorbent Assay; Western Blot (Recombinant protein); Antibody Production; Protein Array
<b>Notes</b>	Best use within three months from the date of receipt of this protein.
<b>Storage</b>	Store at -80 centigrade. Aliquot to avoid repeated freezing and thawing.
<b>Storage Buffer</b>	50 mM Tris-HCl, 10 mM reduced Glutathione, pH=8.0 in the elution buffer.

## GENE INFORMATION

<b>Gene Name</b>	<a href="#">ATP6V0E1 ATPase H+ transporting V0 subunit e1 [ Homo sapiens (human) ]</a>
<b>Official Symbol</b>	<a href="#">ATP6V0E1</a>
<b>Synonyms</b>	ATP6V0E1; ATPase H+ transporting V0 subunit e1; M9.2; ATP6H; Vma21; Vma21p; ATP6V0E; V-type proton ATPase subunit e 1; ATPase, H+ transporting, lysosomal 9kDa, V0 subunit e1; H(+)-transporting two-sector ATPase, subunit H; V-ATPase 9.2 kDa membrane accessory protein; V-ATPase H subunit; V-ATPase M9.2 subunit; V- ATPase subunit e 1; vacuolar ATP synthase subunit H; vacuolar proton pump H subunit; vacuolar proton pump subunit e 1; vacuolar proton-ATPase subunit M9.2; EC 3.6.3.14
<b>Gene ID</b>	<a href="#">8992</a>
<b>mRNA Refseq</b>	<a href="#">NM_003945</a>
<b>Protein Refseq</b>	<a href="#">NP_003936</a>

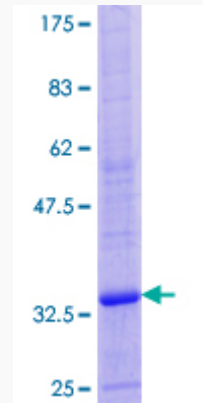
 Tel: 1-631-559-9269 1-516-512-3133

 Email: [info@creative-biomart.com](mailto:info@creative-biomart.com)  Fax: 1-631-938-8127

 45-1 Ramsey Road, Shirley, NY 11967, USA

MIM 603931

UniProt ID O15342



12.5% SDS-PAGE Stained with Coomassie Blue.

Tel: 1-631-559-9269 1-516-512-3133

Email: [info@creative-biomart.com](mailto:info@creative-biomart.com) Fax: 1-631-938-8127

45-1 Ramsey Road, Shirley, NY 11967, USA