

Recombinant Human ATP6V1A protein, GST-tagged

Cat. No. ATP6V1A-1000H **Lot. No.** (See product label)

SPECIFICATION

Product Overview	Human ATP6V1A full-length ORF (AAH13138, 1 a.a. - 617 a.a.) recombinant protein with GST-tag at N-terminal.
Species	Human
Source	Wheat Germ
Description	<p>This gene encodes a component of vacuolar ATPase (V-ATPase), a multisubunit enzyme that mediates acidification of eukaryotic intracellular organelles. V-ATPase dependent organelle acidification is necessary for such intracellular processes as protein sorting, zymogen activation, receptor-mediated endocytosis, and synaptic vesicle proton gradient generation. V-ATPase is composed of a cytosolic V1 domain and a transmembrane V0 domain. The V1 domain consists of three A and three B subunits, two G subunits plus the C, D, E, F, and H subunits. The V1 domain contains the ATP catalytic site. The V0 domain consists of five different subunits: a, c, c', c'', and d. Additional isoforms of many of the V1 and V0 subunit proteins are encoded by multiple genes or alternatively spliced transcript variants. This encoded protein is one of two V1 domain A subunit isoforms and is found in all tissues. Transcript variants derived from alternative polyadenylation exist. [provided by RefSeq, Jul 2008]</p>
Molecular Mass	93.5 kDa
AA Sequence	MDFSKLPKILDEDKSTFGYVHGVSGPVVTACDMAGAAMYELVRVGHSELVGEIIRL EGDMATIQQVYEETSGVSVGDPVLRRTGKPLSVELGPGIMGAIFDGIQRPLSDISSQTQS

 Tel: 1-631-559-9269 1-516-512-3133

 Email: info@creative-biomart.com  Fax: 1-631-938-8127

 45-1 Ramsey Road, Shirley, NY 11967, USA

IYIPRGVNVSALSARDIKWDFTPCNLRVGSHTGGDIYGIVSENSLIKHKIMLPPRNRG
 TVTYIAPPNGYDTSVVLELEFEGVKEKFTMVQVWPVRQVRPVTEKLPANHPLLTG
 QRVLDA LFPCVQGGTTAIPGAFGCGKTVISQSLSKYSNSDVIIYVGCGERGNEMSEV
 LRDFPELTMEVDGKVESIMKRTALVANTSNNMPVAAREASIYTGITLSEYFRDMGYHV
 SMMADSTSRWAEALREISGRLEMPADSGYPAYLGARLASFYERAGRVKCLGNPE
 REGSVSIVGAVSPPGGDFSDPVT SATLGIVQVFWGLDKKLAQRKHFPSVNWLSYSK
 YMRALDEYYDKHFTEFVPLRTKAKEILQEEEDLAEIVQLVGKASLAETDKITLEVAKLI
 KDDFLQQNGYTPYDRFCPFYKTVGMLSNMIAFYDMARRAVETTAQSDNKITWSIIRE
 HMGDILYKLSSMKFKDPLKDGEAKIKSDYAQLLEDMQNAFRSLED

Applications

Enzyme-linked Immunoabsorbent Assay; Western Blot (Recombinant protein);
 Antibody Production; Protein Array

Notes

Best use within three months from the date of receipt of this protein.

Storage

Store at -80 centigrade. Aliquot to avoid repeated freezing and thawing.

Storage Buffer

50 mM Tris-HCl, 10 mM reduced Glutathione, pH=8.0 in the elution buffer.

GENE INFORMATION

Gene Name

[ATP6V1A ATPase, H+ transporting, lysosomal 70kDa, V1 subunit A \[Homo sapiens \]](#)

Official Symbol

[ATP6V1A](#)

Synonyms

ATP6V1A; ATPase, H+ transporting, lysosomal 70kDa, V1 subunit A; ATP6A1,
 ATP6V1A1, ATPase, H+ transporting, lysosomal (vacuolar proton pump), alpha
 polypeptide, 70kD, isoform 1 , VPP2; V-type proton ATPase catalytic subunit A;
 VA68; Vma1; V-ATPase subunit A; V-ATPase A subunit 1; V-ATPase 69 kDa subunit
 1; vacuolar ATPase isoform VA68; vacuolar proton pump subunit alpha; vacuolar
 proton pump alpha subunit 1; ATPase, H+ transporting, lysosomal, subunit A1; H(+)-

 Tel: 1-631-559-9269 1-516-512-3133

 Email: info@creative-biomart.com  Fax: 1-631-938-8127

 45-1 Ramsey Road, Shirley, NY 11967, USA

transporting two-sector ATPase, subunit A; H⁺-transporting ATPase chain A, vacuolar (VA68 type); vacuolar ATP synthase catalytic subunit A, ubiquitous isoform; HO68; VPP2; ATP6A1; ATP6V1A1;

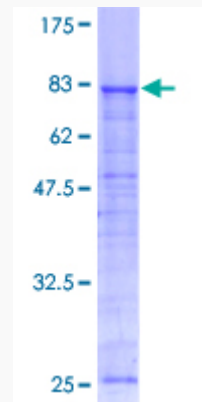
Gene ID 523

mRNA Refseq NM_001690

Protein Refseq NP_001681

MIM 607027

UniProt ID P38606



12.5% SDS-PAGE Stained with Coomassie Blue.

 Tel: 1-631-559-9269 1-516-512-3133

 Email: info@creative-biomart.com  Fax: 1-631-938-8127

 45-1 Ramsey Road, Shirley, NY 11967, USA