

Recombinant Full Length Human ATP6V1B2 Protein, C-Flag-tagged

Cat. No. ATP6V1B2-1223HFL **Lot. No.** (See product label)

SPECIFICATION

Product Overview	Recombinant Full Length Human ATP6V1B2 Protein, fused to Flag-tag at C-terminus, was expressed in Mammalian cells.
Species	Human
Source	Mammalian Cells
Description	This gene encodes a component of vacuolar ATPase (V-ATPase), a multisubunit enzyme that mediates acidification of eukaryotic intracellular organelles. V-ATPase dependent organelle acidification is necessary for such intracellular processes as protein sorting, zymogen activation, receptor-mediated endocytosis, and synaptic vesicle proton gradient generation. V-ATPase is composed of a cytosolic V1 domain and a transmembrane V0 domain. The V1 domain consists of three A, three B, and two G subunits, as well as a C, D, E, F, and H subunit. The V1 domain contains the ATP catalytic site. The protein encoded by this gene is one of two V1 domain B subunit isoforms and is the only B isoform highly expressed in osteoclasts.
Form	25 mM Tris HCl, pH 7.3, 100 mM glycine, 10% glycerol.
Molecular Mass	56.3 kDa
AA Sequence	MALRAMRGIVNGAAPELPVPTGGPAVGAQEALAVSRNYLSQPRLTYKTVSGVNG PLVILDHVKFPARYAE IVHLTLPDGTRSGQVLEVSGSKAVVQVFEGTSGIDAKKTSC EFTGDILRTPVSEDM LGRVFN GSGKPID RGPV VLAEDFLDIMGQPINPQCRIYPEEMI

 Tel: 1-631-559-9269 1-516-512-3133

 Email: info@creative-biomart.com  Fax: 1-631-938-8127

 45-1 Ramsey Road, Shirley, NY 11967, USA

RTGISAIDGMNSIARGQKIPIFSAAGLPHNEIAAQICRQA GLVKKSKDVVDYSEENFAI
 VFAAMGVNMETARFFKSDFEENGSMNDVCLFLNLANPTIERIITPRLALT TAEFLAY
 QCEKHVLVILTDMSSYAEALREVSAAREEVPGRRGFPGYMYTDLATYERAGR VGG
 RNGSITQ IPILTMPNDDITHPIPDLTGYITEGQIYVDRQLHNRQIYPPINVLPSLSRLMK
 SAIGEGMTRKDHADVSN QLYACYAIGKDVQAMKAVVGEEALTSDDLLYLEFLQKFE
 RNFIAQGOPYENRTVFETLDIGWQLLRIFPKE
 MLKRIPQSTLSEFYPRDSAKHTRTRPLEQKLISEEDLAANDILDYKDDDDKV

Purity > 80% as determined by SDS-PAGE and Coomassie blue staining.

Stability Stable for 12 months from the date of receipt of the product under proper storage and handling conditions. Avoid repeated freeze-thaw cycles.

Storage Store at -80 centigrade.

Concentration >50 ug/mL as determined by microplate BCA method.

Preparation Recombinant protein was captured through anti-DDK affinity column followed by conventional chromatography steps.

Protein Families Druggable Genome

Protein Pathways Epithelial cell signaling in Helicobacter pylori infection, Metabolic pathways, Oxidative phosphorylation, Vibrio cholerae infection

Full Length Full L.

GENE INFORMATION

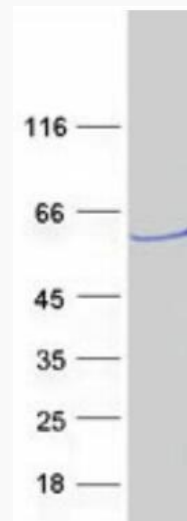
Gene Name [ATP6V1B2 ATPase H+ transporting V1 subunit B2 \[Homo sapiens \(human\) \]](#)

 Tel: 1-631-559-9269 1-516-512-3133

 Email: info@creative-biomart.com  Fax: 1-631-938-8127

 45-1 Ramsey Road, Shirley, NY 11967, USA

Official Symbol	ATP6V1B2
Synonyms	DOOD; HO57; VATB; VPP3; Vma2; ZLS2; ATP6B2; ATP6B1B2
Gene ID	526
mRNA Refseq	NM_001693.4
Protein Refseq	NP_001684.2
MIM	606939
UniProt ID	P21281



Coomassie blue staining of purified ATP6V1B2 protein.

 Tel: 1-631-559-9269 1-516-512-3133

 Email: info@creative-biomart.com  Fax: 1-631-938-8127

 45-1 Ramsey Road, Shirley, NY 11967, USA