

Recombinant Human ATP6V1B2 Protein, Myc/DDK-tagged, C13 and N15-labeled

Cat. No. ATP6V1B2-2300H **Lot. No.** (See product label)

SPECIFICATION

Product Overview

ATP6V1B2 MS Standard C13 and N15-labeled recombinant protein (NP_001684) with a C-terminal MYC/DDK tag, was expressed in HEK293 cells.

Species

Human

Source

HEK293

Description

This gene encodes a component of vacuolar ATPase (V-ATPase), a multisubunit enzyme that mediates acidification of eukaryotic intracellular organelles. V-ATPase dependent organelle acidification is necessary for such intracellular processes as protein sorting, zymogen activation, receptor-mediated endocytosis, and synaptic vesicle proton gradient generation. V-ATPase is composed of a cytosolic V1 domain and a transmembrane V0 domain. The V1 domain consists of three A, three B, and two G subunits, as well as a C, D, E, F, and H subunit. The V1 domain contains the ATP catalytic site. The protein encoded by this gene is one of two V1 domain B subunit isoforms and is the only B isoform highly expressed in osteoclasts.

Molecular Mass

56.4 kDa

AA Sequence

MALRAMRGIVNGAAPELPVPTGGPAVGAQEALAVSRNYLSQPRLTYKTVSGVNG
 PLVILDHVKFPRYAEIVHLTLPDGTKRSGQVLEVSGSKAVVQVFEGTSGIDAKKTSCE
 FTGDILRTPVSEDMLGRVFNGSGKPIDRGPVLAEDFLDIMGQPINPQCRIYPEEMIR
 TGISAIDGMNSIARGQKIPIFSAAGLPHNEIAAQICRQAGLVKSKDVVVDYSEENFAIV

 Tel: 1-631-559-9269 1-516-512-3133

 Email: info@creative-biomart.com  Fax: 1-631-938-8127

 45-1 Ramsey Road, Shirley, NY 11967, USA

FAAMGVNMETARFFKSDFEENGSMNDVCLFLNLANPTIERIITPRLALTTAEFLAYQ
 CEKHVLVILTDMSYAEALREVSAAREEVPGRRGFPGYMYTDLATIYERAGRVGGR
 NGSITQIPILTMPNDDITHPIPDLTGYITEGQIYVDRQLHNRQIYPPINVLPSLSRLMKS
 AIGEGMTRKDHADVSNQLYACYAIGKDVQAMKAVVGEEALTSDDLLEYFLQKFER
 NFIAQGPYENRTVFETLDIGWQLLRIFPKEMLKRIQSTLSEFYPRDSAKHTRTRPLE
 QKLISEEDLAANDILDYKDDDDKV

Purity	> 80% as determined by SDS-PAGE and Coomassie blue staining
Stability	Stable for 3 months from receipt of products under proper storage and handling conditions.
Storage	Store at -80 centigrade. Avoid repeated freeze-thaw cycles.
Concentration	50 µg/mL as determined by BCA
Storage Buffer	100 mM glycine, 25 mM Tris-HCl, pH 7.3.

GENE INFORMATION

Gene Name	ATP6V1B2 ATPase H ⁺ transporting V1 subunit B2 [Homo sapiens (human)]
Official Symbol	ATP6V1B2
Synonyms	ATP6V1B2; ATPase, H ⁺ transporting, lysosomal 56/58kDa, V1 subunit B2; ATP6B2, ATPase, H ⁺ transporting, lysosomal (vacuolar proton pump), beta polypeptide, 56/58kD, isoform 2, ATPase, H ⁺ transporting, lysosomal 56/58kDa, V1 subunit B, isoform 2, VPP3; V-type proton ATPase subunit B, brain isoform; HO57; VATB; Vma2; V-ATPase B2 subunit; V-ATPase subunit B 2; vacuolar proton pump subunit B 2; H ⁺ transporting two-sector ATPase; vacuolar H ⁺ -ATPase 56,000 subunit; endomembrane proton pump 58 kDa subunit; VPP3; ATP6B2; ATP6B1B2;

 Tel: 1-631-559-9269 1-516-512-3133

 Email: info@creative-biomart.com  Fax: 1-631-938-8127

 45-1 Ramsey Road, Shirley, NY 11967, USA

Gene ID 526

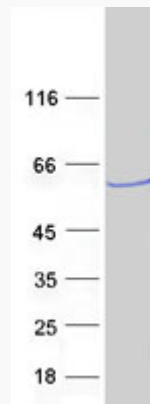
mRNA Refseq NM_001693

Protein Refseq NP_001684

MIM 606939

UniProt ID P21281

SDS-PAGE



 Tel: 1-631-559-9269 1-516-512-3133

 Email: info@creative-biomart.com  Fax: 1-631-938-8127

 45-1 Ramsey Road, Shirley, NY 11967, USA