

## Recombinant Human ATP6V1C1 protein, GST-tagged

**Cat. No.** ATP6V1C1-1003H    **Lot. No.** (See product label)

### SPECIFICATION

<b>Product Overview</b>	Human ATP6V1C1 full-length ORF ( NP_001686.1, 1 a.a. - 382 a.a.) recombinant protein with GST-tag at N-terminal.
<b>Species</b>	Human
<b>Source</b>	Wheat Germ
<b>Description</b>	<p>This gene encodes a component of vacuolar ATPase (V-ATPase), a multisubunit enzyme that mediates acidification of intracellular compartments of eukaryotic cells. V-ATPase dependent acidification is necessary for such intracellular processes as protein sorting, zymogen activation, receptor-mediated endocytosis, and synaptic vesicle proton gradient generation. V-ATPase is composed of a cytosolic V1 domain and a transmembrane V0 domain. The V1 domain consists of three A and three B subunits, two G subunits plus the C, D, E, F, and H subunits. The V1 domain contains the ATP catalytic site. The V0 domain consists of five different subunits: a, c, c', c'', and d. Additional isoforms of many of the V1 and V0 subunit proteins are encoded by multiple genes or alternatively spliced transcript variants. This gene is one of two genes that encode the V1 domain C subunit proteins and is found ubiquitously. This C subunit is analogous but not homologous to gamma subunit of F-ATPases. Previously, this gene was designated ATP6D. [provided by RefSeq, Jul 2008]</p>
<b>Molecular Mass</b>	70.3 kDa
<b>AA Sequence</b>	MTEFWLISAPGEKTCQQTWEKLHAATSKNNNLAVTSKFNIPDLKVGTL DVLVGLSDE

 Tel: 1-631-559-9269    1-516-512-3133

 Email: [info@creative-biomart.com](mailto:info@creative-biomart.com)     Fax: 1-631-938-8127

 45-1 Ramsey Road, Shirley, NY 11967, USA

LAKLDAFVEGVVKKVAQYMADVLEDSKDKVQENLLANGVDLVITYITRFQWDMAKYPI  
 KQSLKNISEIIAKGVTQIDNDLKSRSAYNNLKGNLQNLERKNAGSLLTRSLAEIVKKD  
 DFVLDSEYLVTLVVVVKLNHNDWIKQYETLAEMVVPRSSNVLSEDQDSYLCNVTLF  
 RKAVDDFRHKARENKFIVRDFQYNEEEMKADKEEMNRLSTDKKKQFGLVLRWLKV  
 NFSEAFIAWIHVKALRVFVESVLRVGLPVNFQAMLLQPNNKTLKKLREVLHELKHL  
 SSAAAIIDAPMDIPGLNLSQQEYYPYVYYKIDCNLLEFK

**Applications**

Enzyme-linked Immunoabsorbent Assay; Western Blot (Recombinant protein);  
 Antibody Production; Protein Array

**Notes**

Best use within three months from the date of receipt of this protein.

**Storage**

Store at -80 centigrade. Aliquot to avoid repeated freezing and thawing.

**Storage Buffer**

50 mM Tris-HCl, 10 mM reduced Glutathione, pH=8.0 in the elution buffer.

## GENE INFORMATION

**Gene Name**

ATP6V1C1 ATPase, H<sup>+</sup> transporting, lysosomal 42kDa, V1 subunit C1 [ Homo sapiens ]

**Official Symbol**

ATP6V1C1

**Synonyms**

ATP6C; ATP6D; ATP6V1C1; ATPase H<sup>+</sup> transporting lysosomal (vacuolar proton pump) 42kD; ATPase H<sup>+</sup> transporting lysosomal 42kD V1 subunit C isoform 1; ATPase H<sup>+</sup> transporting lysosomal 42kDa V1 subunit C isoform 1; ATPase H<sup>+</sup> transporting lysosomal 42kDa V1 subunit C1; ATPase H<sup>+</sup> transporting lysosomal V1 subunit C1; FLJ20057; H(+) transporting two sector ATPase subunit C; H<sup>+</sup> ATPase C subunit; H<sup>+</sup> transporting ATPase chain C vacuolar; Subunit C of vacuolar proton ATPase V1 domain; V ATPase C subunit; V ATPase subunit C 1; V-ATPase subunit C 1; V-type proton ATPase subunit C 1; Vacuolar ATP synthase subunit C; Vacuolar

 Tel: 1-631-559-9269 1-516-512-3133

 Email: [info@creative-biomart.com](mailto:info@creative-biomart.com)  Fax: 1-631-938-8127

 45-1 Ramsey Road, Shirley, NY 11967, USA

proton pump 42 kD subunit; Vacuolar proton pump C subunit; Vacuolar proton pump subunit C 1; Vacuolar protonATPase subunit C VI domain; VATC; VATC1\_HUMAN; VATPase C subunit; VATPase subunit C 1; VMA5; ATP6V1C1

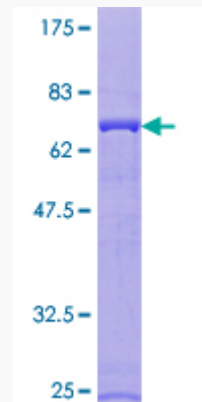
**Gene ID** 528

**mRNA Refseq** NM\_001695.4

**Protein Refseq** NP\_001686.1

**MIM** 603097

**UniProt ID** P21283



12.5% SDS-PAGE Stained with Coomassie Blue.

 Tel: 1-631-559-9269 1-516-512-3133

 Email: [info@creative-biomart.com](mailto:info@creative-biomart.com)  Fax: 1-631-938-8127

 45-1 Ramsey Road, Shirley, NY 11967, USA