

Recombinant Human ATP6V1C1 Protein, Myc/DDK-tagged, C13 and N15-labeled

Cat. No. ATP6V1C1-1161H Lot. No. (See product label)

SPECIFICATION

Product Overview

ATP6V1C1 MS Standard C13 and N15-labeled recombinant protein (NP_001686) with a C-terminal MYC/DDK tag, was expressed in HEK293 cells.

Species

Human

Source

HEK293

Description

This gene encodes a component of vacuolar ATPase (V-ATPase), a multisubunit enzyme that mediates acidification of intracellular compartments of eukaryotic cells. V-ATPase dependent acidification is necessary for such intracellular processes as protein sorting, zymogen activation, receptor-mediated endocytosis, and synaptic vesicle proton gradient generation. V-ATPase is composed of a cytosolic V1 domain and a transmembrane V0 domain. The V1 domain consists of three A and three B subunits, two G subunits plus the C, D, E, F, and H subunits. The V1 domain contains the ATP catalytic site. The V0 domain consists of five different subunits: a, c, c', c'', and d. Additional isoforms of many of the V1 and V0 subunit proteins are encoded by multiple genes or alternatively spliced transcript variants. This gene is one of two genes that encode the V1 domain C subunit proteins and is found ubiquitously. This C subunit is analogous but not homologous to gamma subunit of F-ATPases. Previously, this gene was designated ATP6D.

Molecular Mass

43.9 kDa

 Tel: 1-631-559-9269 1-516-512-3133

 Email: info@creative-biomart.com  Fax: 1-631-938-8127

 45-1 Ramsey Road, Shirley, NY 11967, USA

AA Sequence

MTEFWLISAPGEKTCQQTWEKLHAATSKNNNLAVTSKFNIPDLKVGTL DVLVGLSDE
 LAKLDAFVEGVVKKVAQYMADVLEDSKDKVQENLLANGVDLVITYITRFQWDMAKYPI
 KQSLKNISEIIAKGVTQIDNDLKSRSAYNNLKGNLQNLERKNAGSLLTRSLAEIVKKD
 DFVLDSEYLVTLVVVPKLNHNDWIKQYETLAEMVVPRSSNVLSEDQDSYLCNVTLF
 RKAVD DFRHKARENKFIVRDFQYNEEEMKADKEEMNRLSTD KKKQFGPLVRWLKV
 NFSEAFIAWIHV KALRVFVESVLR YGLPVNFQAMLLQPNKKT LKKLREVLHELKHL D
 SSAAAIIDAPMDIPGLNLSQQEYYPVYVKIDCNLLEFKTRTRPLEQKLISEEDLAANDI
 LDYKDDDDKV

Purity > 80% as determined by SDS-PAGE and Coomassie blue staining

Stability Stable for 3 months from receipt of products under proper storage and handling conditions.

Storage Store at -80 centigrade. Avoid repeated freeze-thaw cycles.

Concentration 50 µg/mL as determined by BCA

Storage Buffer 100 mM glycine, 25 mM Tris-HCl, pH 7.3.

GENE INFORMATION

Gene Name [ATP6V1C1 ATPase H+ transporting V1 subunit C1 \[Homo sapiens \(human\) \]](#)

Official Symbol [ATP6V1C1](#)

Synonyms

ATP6C; ATP6D; ATP6V1C1; ATPase H+ transporting lysosomal (vacuolar proton pump) 42kD; ATPase H+ transporting lysosomal 42kD V1 subunit C isoform 1; ATPase H+ transporting lysosomal 42kDa V1 subunit C isoform 1; ATPase H+ transporting lysosomal 42kDa V1 subunit C1; ATPase H+ transporting lysosomal V1 subunit C1; FLJ20057; H(+) transporting two sector ATPase subunit C; H+ ATPase C

 Tel: 1-631-559-9269 1-516-512-3133

 Email: info@creative-biomart.com  Fax: 1-631-938-8127

 45-1 Ramsey Road, Shirley, NY 11967, USA

subunit; H⁺ transporting ATPase chain C vacuolar; Subunit C of vacuolar proton ATPase V1 domain; V ATPase C subunit; V ATPase subunit C 1; V-ATPase subunit C 1; V-type proton ATPase subunit C 1; Vacuolar ATP synthase subunit C; Vacuolar proton pump 42 kD subunit; Vacuolar proton pump C subunit; Vacuolar proton pump subunit C 1; Vacuolar protonATPase subunit C VI domain; VATC; VATC1_HUMAN; VATPase C subunit; VATPase subunit C 1; VMA5; ATP6V1C1

Gene ID [528](#)

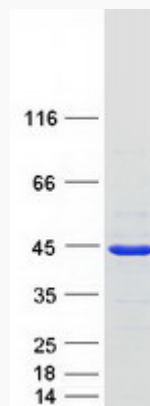
mRNA Refseq [NM_001695](#)

Protein Refseq [NP_001686](#)

MIM [603097](#)

UniProt ID [P21283](#)

SDS-PAGE



 Tel: 1-631-559-9269 1-516-512-3133

 Email: info@creative-biomart.com  Fax: 1-631-938-8127

 45-1 Ramsey Road, Shirley, NY 11967, USA