

Recombinant Human ATP6V1C1 Protein, His-tagged

Cat. No. ATP6V1C1-28H Lot. No. (See product label)

SPECIFICATION

Product Overview	Recombinant Human ATP6V1C1 Protein(P21283)(156-256 aa), fused with C-terminal His tag, was expressed in E.coli.
Species	Human
Source	E.coli
ProteinLength	61-340 aa
Form	Phosphate buffered saline.
Molecular Mass	35 kDa
AASequence	LDAFVEGVVKKVAQYMADVLEDSKDKVQENLLANGVDLVITYITRFQWDMAKYPIKQ SLKNISEIIAKGVTQIDNDLKSASAYNNLKGNLQNLERKNAGSLLTRSLAEIVKKDDF VLDSEYLVTLVVVVKLNHNDWIKQYETLAEMVVPRSSNVLSEDQDSYLCNVTLFRK AVDDFRHKARENKFIVRDFQYNEEEMKADKEEMNRLSTDKKKQFGPLVRWLKVN SEAFIAWIHVKALRVFVESVLRVGLPVNFQAMLLQPNKKTLLKREVLHELYK
Storage	Store at -20 to -80°C.
Reconstitution	It is recommended that sterile water be added to the vial to prepare a stock solution of 0.2 ug/ul. Centrifuge the vial at 4°C before opening to recover the entire contents.

GENE INFORMATION

 Tel: 1-631-559-9269 1-516-512-3133

 Email: info@creative-biomart.com  Fax: 1-631-938-8127

 45-1 Ramsey Road, Shirley, NY 11967, USA

Gene Name	ATP6V1C1 ATPase, H+ transporting, lysosomal 42kDa, V1 subunit C1 [Homo sapiens]
Official Symbol	ATP6V1C1
Synonyms	ATP6C; ATP6D; ATP6V1C1; ATPase H+ transporting lysosomal (vacuolar proton pump) 42kD; ATPase H+ transporting lysosomal 42kD V1 subunit C isoform 1; ATPase H+ transporting lysosomal 42kDa V1 subunit C isoform 1; ATPase H+ transporting lysosomal 42kDa V1 subunit C1; ATPase H+ transporting lysosomal V1 subunit C1; FLJ20057; H(+) transporting two sector ATPase subunit C; H+ ATPase C subunit; H+ transporting ATPase chain C vacuolar; Subunit C of vacuolar proton ATPase V1 domain; V ATPase C subunit; V ATPase subunit C 1; V-ATPase subunit C 1; V-type proton ATPase subunit C 1; Vacuolar ATP synthase subunit C; Vacuolar proton pump 42 kD subunit; Vacuolar proton pump C subunit; Vacuolar proton pump subunit C 1; Vacuolar protonATPase subunit C VI domain; VATC; VATC1_HUMAN; VATPase C subunit; VATPase subunit C 1; VMA5; ATP6V1C1
Gene ID	528
mRNA Refseq	NM_001695.4
Protein Refseq	NP_001686.1
MIM	603097
UniProt ID	P21283

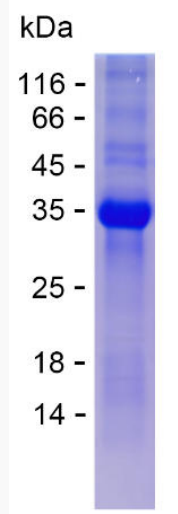
 Tel: 1-631-559-9269 1-516-512-3133

 Email: info@creative-biomart.com  Fax: 1-631-938-8127

 45-1 Ramsey Road, Shirley, NY 11967, USA



SDS-PAGE



Tel: 1-631-559-9269 1-516-512-3133

Email: info@creative-biomart.com Fax: 1-631-938-8127

45-1 Ramsey Road, Shirley, NY 11967, USA