

## Recombinant Human ATP6V1C2 protein, GST-tagged

**Cat. No.** ATP6V1C2-1004H    **Lot. No.** (See product label)

### SPECIFICATION

<b>Product Overview</b>	Human ATP6V1C2 full-length ORF ( AAH12142.1, 1 a.a. - 381 a.a.) recombinant protein with GST-tag at N-terminal.
<b>Species</b>	Human
<b>Source</b>	Wheat Germ
<b>Description</b>	This gene encodes a component of vacuolar ATPase (V-ATPase), a multisubunit enzyme that mediates acidification of eukaryotic intracellular organelles. V-ATPase dependent organelle acidification is necessary for such intracellular processes as protein sorting, zymogen activation, receptor-mediated endocytosis, and synaptic vesicle proton gradient generation. V-ATPase is composed of a cytosolic V1 domain and a transmembrane V0 domain. The V1 domain consists of three A, three B, and two G subunits, as well as a C, D, E, F, and H subunit. The V1 domain contains the ATP catalytic site. This gene encodes alternate transcriptional splice variants, encoding different V1 domain C subunit isoforms. [provided by RefSeq, Jul 2008]
<b>Molecular Mass</b>	70.3 kDa
<b>AA Sequence</b>	MSEFWLISAPGDKENLQALERMNTVTSKSNLSYNTKFAIPDFKVGTLDSLVLGSLDEL GKLDTFAESLIRRMAQSVVEVMEDSKGKQVEHLLANGVDLTSFVTHFEWDMAYKPV KQPLVSVVDTIKQLAQIEMDLKSRTAAYDTLKTNLNLEKKSMDGNLFRRTLSDIVSK EDFVLDSEYLVTLVIVPKPNYSQWQKTYESLSDMVVPRSTKLITDEKGGFLTFTLF RKVIEDFKTKAKENKFTVREFYYDEKEIEREREEMARLLSDKKQYGPLLRWLKVN

 Tel: 1-631-559-9269    1-516-512-3133

 Email: [info@creative-biomart.com](mailto:info@creative-biomart.com)     Fax: 1-631-938-8127

 45-1 Ramsey Road, Shirley, NY 11967, USA

SEAFIAWIHIKALRVFVESVRLRYGLPVNFQAVLLQPHKKSSTKRLREVLNSVFRHLDE  
VAATSILDASVEIPGLQLNNDYFPYVYFHIDLSLLD

**Applications**

Enzyme-linked Immunoabsorbent Assay; Western Blot (Recombinant protein);  
Antibody Production; Protein Array

**Notes**

Best use within three months from the date of receipt of this protein.

**Storage**

Store at -80 centigrade. Aliquot to avoid repeated freezing and thawing.

**Storage Buffer**

50 mM Tris-HCl, 10 mM reduced Glutathione, pH=8.0 in the elution buffer.

## GENE INFORMATION

**Gene Name**

[ATP6V1C2 ATPase, H+ transporting, lysosomal 42kDa, V1 subunit C2 \[ Homo sapiens \]](#)

**Official Symbol**

[ATP6V1C2](#)

**Synonyms**

ATP6V1C2; ATPase, H+ transporting, lysosomal 42kDa, V1 subunit C2; ATPase, H+ transporting, lysosomal 42kD, V1 subunit C isoform 2 , ATPase, H+ transporting, lysosomal 42kDa, V1 subunit C isoform 2; V-type proton ATPase subunit C 2; ATP6C2; VMA5; V-ATPase C2 subunit; V-ATPase subunit C 2; vacuolar proton pump subunit C 2;

**Gene ID**

[245973](#)

**mRNA Refseq**

[NM\\_001039362](#)

**Protein Refseq**

[NP\\_001034451](#)

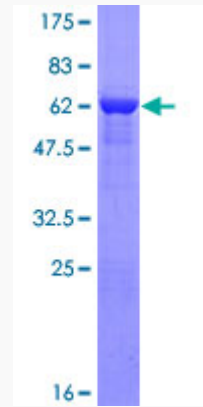
 Tel: 1-631-559-9269 1-516-512-3133

 Email: [info@creative-biomart.com](mailto:info@creative-biomart.com)  Fax: 1-631-938-8127

 45-1 Ramsey Road, Shirley, NY 11967, USA

UniProt ID

Q8NEY4



12.5% SDS-PAGE Stained with Coomassie Blue.

 Tel: 1-631-559-9269 1-516-512-3133

 Email: [info@creative-biomart.com](mailto:info@creative-biomart.com)  Fax: 1-631-938-8127

 45-1 Ramsey Road, Shirley, NY 11967, USA