

Recombinant Human ATP6V1E1 protein, GST-tagged

Cat. No. ATP6V1E1-1006H **Lot. No.** (See product label)

SPECIFICATION

Product Overview Human ATP6V1E1 full-length ORF (AAH04443, 1 a.a. - 226 a.a.) recombinant protein with GST-tag at N-terminal.

Species Human

Source Wheat Germ

Description

This gene encodes a component of vacuolar ATPase (V-ATPase), a multisubunit enzyme that mediates acidification of eukaryotic intracellular organelles. V-ATPase dependent organelle acidification is necessary for such intracellular processes as protein sorting, zymogen activation, receptor-mediated endocytosis, and synaptic vesicle proton gradient generation. V-ATPase is composed of a cytosolic V1 domain and a transmembrane V0 domain. The V1 domain consists of three A, three B, and two G subunits, as well as a C, D, E, F, and H subunit. The V1 domain contains the ATP catalytic site. This gene encodes alternate transcriptional splice variants, encoding different V1 domain E subunit isoforms. Pseudogenes for this gene have been found in the genome. [provided by RefSeq, Jul 2008]

Molecular Mass 50.60 kDa

AA Sequence

MALSDADVQKQIKHMMAFIEQEANEKAEEDAKAEFEFNIEKGRVLTQRLKIMEYYE
 KKEKQIEQQKKIQMSNLMNQARLKVLRARDDLITDLLNEAKQRLSKVVKDTTRYQVL
 LDGLVLQGLYQLLEPRMIVRCRKQDFPLVKAQVKAIPMYKIATKNDVDVQIDQESYL
 PEDIAGGVEIYNGDRKIKVSNTLESRLDLIAQQMMPEVIRGALFGANANRKFLD

 Tel: 1-631-559-9269 1-516-512-3133

 Email: info@creative-biomart.com  Fax: 1-631-938-8127

 45-1 Ramsey Road, Shirley, NY 11967, USA

Applications	Enzyme-linked Immunoabsorbent Assay; Western Blot (Recombinant protein); Antibody Production; Protein Array
Notes	Best use within three months from the date of receipt of this protein.
Storage	Store at -80 centigrade. Aliquot to avoid repeated freezing and thawing.
Storage Buffer	50 mM Tris-HCl, 10 mM reduced Glutathione, pH=8.0 in the elution buffer.
GENE INFORMATION	
Gene Name	ATP6V1E1 ATPase, H+ transporting, lysosomal 31kDa, V1 subunit E1 [Homo sapiens]
Official Symbol	ATP6V1E1
Synonyms	ATP6V1E1; ATPase, H+ transporting, lysosomal 31kDa, V1 subunit E1; ATP6E, ATP6V1E, ATPase, H+ transporting, lysosomal (vacuolar proton pump) 31kD , ATPase, H+ transporting, lysosomal 31kDa, V1 subunit E isoform 1; V-type proton ATPase subunit E 1; ATP6E2; P31; Vma4; V-ATPase, subunit E; V-ATPase subunit E 1; V-ATPase 31 kDa subunit; vacuolar proton pump subunit E 1; H+-transporting ATP synthase chain E, vacuolar; H(+)-transporting two-sector ATPase, 31kDa subunit; ATP6E; ATP6V1E;
Gene ID	529
mRNA Refseq	NM_001039366
Protein Refseq	NP_001034455
MIM	108746

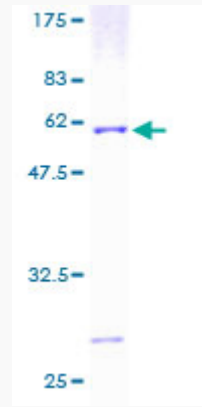
 Tel: 1-631-559-9269 1-516-512-3133

 Email: info@creative-biomart.com  Fax: 1-631-938-8127

 45-1 Ramsey Road, Shirley, NY 11967, USA

UniProt ID

P36543



12.5% SDS-PAGE Stained with Coomassie Blue.

 Tel: 1-631-559-9269 1-516-512-3133

 Email: info@creative-biomart.com  Fax: 1-631-938-8127

 45-1 Ramsey Road, Shirley, NY 11967, USA