

Recombinant Human ATP6V1E2 protein, GST-tagged

Cat. No. ATP6V1E2-1007H **Lot. No.** (See product label)

SPECIFICATION

Product Overview	Human ATP6V1E2 full-length ORF (NP_542384.1, 1 a.a. - 226 a.a.) recombinant protein with GST-tag at N-terminal.
Species	Human
Source	Wheat Germ
Description	ATP6V1E2 (ATPase H ⁺ Transporting V1 Subunit E2) is a Protein Coding gene. Among its related pathways are Ion channel transport and Immune System. GO annotations related to this gene include proton-transporting ATPase activity, rotational mechanism and hydrogen-exporting ATPase activity, phosphorylative mechanism. An important paralog of this gene is ATP6V1E1.
Molecular Mass	52.5 kDa
AA Sequence	MALSDVDVKKQIKHMMAFIEQEANEKAAEEIDAKAEEEFNIEKGRLVQTQRLKIMEYYE KKEKQIEQQKILMSTMRNQARLKVLRARNDLISDLLSEAKLRLSRIVEDPEVYQGLL DKLVLQGLLRLLLEPVMIVRCRPQDLLLVEAAVQKAIPEYMTISQKHVEVQIDKEAYLA VNAAGGVEVYSGNQRIKVSNTLESRLDLSAKQKMPEIRMALFGANTNRKFFI
Applications	Enzyme-linked Immunoabsorbent Assay; Western Blot (Recombinant protein); Antibody Production; Protein Array
Notes	Best use within three months from the date of receipt of this protein.

 Tel: 1-631-559-9269 1-516-512-3133

 Email: info@creative-biomart.com  Fax: 1-631-938-8127

 45-1 Ramsey Road, Shirley, NY 11967, USA

Storage Store at -80 centigrade. Aliquot to avoid repeated freezing and thawing.

Storage Buffer 50 mM Tris-HCl, 10 mM reduced Glutathione, pH=8.0 in the elution buffer.

GENE INFORMATION

Gene Name [ATP6V1E2 ATPase H+ transporting V1 subunit E2 \[Homo sapiens \(human\) \]](#)

Official Symbol [ATP6V1E2](#)

Synonyms ATP6V1E2; ATPase H+ transporting V1 subunit E2; VMA4; ATP6E1; ATP6EL2; ATP6V1EL2; V-type proton ATPase subunit E 2; ATPase, H+ transporting, lysosomal 31kDa, V1 subunit E2; V-ATPase subunit E 2; testis secretory sperm-binding protein Li 235P; vacuolar proton pump subunit E 2; vacuolar-type proton-translocating ATPase subunit E1

Gene ID [90423](#)

mRNA Refseq [NM_001318063](#)

Protein Refseq [NP_001304992](#)

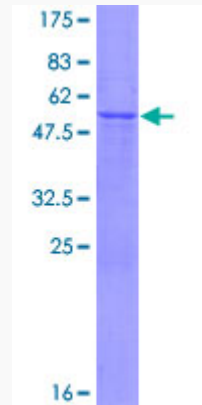
MIM [617385](#)

UniProt ID [Q96A05](#)

 Tel: 1-631-559-9269 1-516-512-3133

 Email: info@creative-biomart.com  Fax: 1-631-938-8127

 45-1 Ramsey Road, Shirley, NY 11967, USA



12.5% SDS-PAGE Stained with Coomassie Blue.

 Tel: 1-631-559-9269 1-516-512-3133

 Email: info@creative-biomart.com  Fax: 1-631-938-8127

 45-1 Ramsey Road, Shirley, NY 11967, USA