

Recombinant Human ATP6V1G1 protein, GST-tagged

Cat. No. ATP6V1G1-1009H **Lot. No.** (See product label)

SPECIFICATION

Product Overview	Human ATP6V1G1 full-length ORF (NP_004879.1, 1 a.a. - 118 a.a.) recombinant protein with GST-tag at N-terminal.
Species	Human
Source	Wheat Germ
Description	This gene encodes a component of vacuolar ATPase (V-ATPase), a multisubunit enzyme that mediates acidification of eukaryotic intracellular organelles. V-ATPase dependent organelle acidification is necessary for such intracellular processes as protein sorting, zymogen activation, receptor-mediated endocytosis, and synaptic vesicle proton gradient generation. V-ATPase is composed of a cytosolic V1 domain and a transmembrane V0 domain. The V1 domain consists of three A, three B, and two G subunits, as well as a C, D, E, F, and H subunit. The V1 domain contains the ATP catalytic site. The protein encoded by this gene is one of three V1 domain G subunit proteins. Pseudogenes of this gene have been characterized. [provided by RefSeq, Jul 2008]
Molecular Mass	40.2 kDa
AA Sequence	MASQSQGIQQLLQAEKRAAEKVSEARKRKNRRLKQAKEEAQAEIEQYRLQREKEFK AKEAAALGSRGSCSTEVEKETQEKMTILQTYFRQNRDEVLDNLLAFVCDIRPEIHEN YRING
Applications	Enzyme-linked Immunoabsorbent Assay; Western Blot (Recombinant protein);

 Tel: 1-631-559-9269 1-516-512-3133

 Email: info@creative-biomart.com  Fax: 1-631-938-8127

 45-1 Ramsey Road, Shirley, NY 11967, USA

Antibody Production; Protein Array

Notes

Best use within three months from the date of receipt of this protein.

Storage

Store at -80 centigrade. Aliquot to avoid repeated freezing and thawing.

Storage Buffer

50 mM Tris-HCl, 10 mM reduced Glutathione, pH=8.0 in the elution buffer.

GENE INFORMATION

Gene Name

ATP6V1G1 ATPase, H⁺ transporting, lysosomal 13kDa, V1 subunit G1 [Homo sapiens]

Official Symbol

ATP6V1G1

Synonyms

ATP6V1G1; ATPase, H⁺ transporting, lysosomal 13kDa, V1 subunit G1; ATP6G1, ATP6J, ATPase, H⁺ transporting, lysosomal (vacuolar proton pump), member J , ATPase, H⁺ transporting, lysosomal 13kDa, V1 subunit G isoform 1; V-type proton ATPase subunit G 1; ATP6G; ATP6GL; DKFZp547P234; Vma10; V-ATPase subunit G 1; V-ATPase 13 kDa subunit 1; vacuolar H(+)-ATPase subunit G 1; vacuolar proton pump subunit G 1; vacuolar proton pump subunit M16; vacuolar ATP synthase subunit M16; ATPase, H⁺ transporting, lysosomal (vacuolar proton pump), member J; ATP6J; ATP6G1;

Gene ID

9550

mRNA Refseq

NM_004888

Protein Refseq

NP_004879

MIM

607296

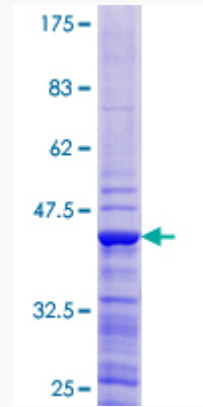
 Tel: 1-631-559-9269 1-516-512-3133

 Email: info@creative-biomart.com  Fax: 1-631-938-8127

 45-1 Ramsey Road, Shirley, NY 11967, USA

UniProt ID

O75348



12.5% SDS-PAGE Stained with Coomassie Blue.

 Tel: 1-631-559-9269 1-516-512-3133

 Email: info@creative-biomart.com  Fax: 1-631-938-8127

 45-1 Ramsey Road, Shirley, NY 11967, USA