

Recombinant Human ATP6V1G2 Protein, Myc/DDK-tagged, C13 and N15-labeled

Cat. No. ATP6V1G2-5657H Lot. No. (See product label)

SPECIFICATION

Product Overview	ATP6V1G2 MS Standard C13 and N15-labeled recombinant protein (NP_612139) with a C-terminal MYC/DDK tag, was expressed in HEK293 cells.
Species	Human
Source	HEK293
Description	<p>This gene encodes a component of vacuolar ATPase (V-ATPase), a multisubunit enzyme that mediates acidification of intracellular compartments of eukaryotic cells. V-ATPase dependent acidification is necessary for such intracellular processes as protein sorting, zymogen activation, receptor-mediated endocytosis, and synaptic vesicle proton gradient generation. V-ATPase is composed of a cytosolic V1 domain and a transmembrane V0 domain. The V1 domain consists of three A and three B subunits, two G subunits plus the C, D, E, F, and H subunits. The V1 domain contains the ATP catalytic site. The V0 domain consists of five different subunits: a, c, c', c'', and d. Additional isoforms of many of the V1 and V0 subunit proteins are encoded by multiple genes or alternatively spliced transcript variants. This encoded protein is one of three V1 domain G subunit proteins. This gene had previous gene symbols of ATP6G and ATP6G2. Alternatively spliced transcript variants encoding different isoforms have been described. Read-through transcription also exists between this gene and the downstream DEAD (Asp-Glu-Ala-Asp) box polypeptide 39B (DDX39B) gene.</p>

 Tel: 1-631-559-9269 1-516-512-3133

 Email: info@creative-biomart.com  Fax: 1-631-938-8127

 45-1 Ramsey Road, Shirley, NY 11967, USA

Molecular Mass	13.6 kDa
AA Sequence	MASQSQGIQQLLQAEKRAAEKVADARKRKARRLKQAKEEAQMEVEQYRREREHEF QSKQQAAMGSQGNLSAEVEQATRRQVQGMQSSQQRNRERVLAQLLGMVCDVRP QVHPNYRISATRTRPLEQKLISEEDLAANDILDYKDDDDKV
Purity	> 80% as determined by SDS-PAGE and Coomassie blue staining
Stability	Stable for 3 months from receipt of products under proper storage and handling conditions.
Storage	Store at -80 centigrade. Avoid repeated freeze-thaw cycles.
Concentration	50 µg/mL as determined by BCA
Storage Buffer	100 mM glycine, 25 mM Tris-HCl, pH 7.3.

GENE INFORMATION

Gene Name	ATP6V1G2 ATPase H ⁺ transporting V1 subunit G2 [Homo sapiens (human)]
Official Symbol	ATP6V1G2
Synonyms	ATP6V1G2; ATPase, H ⁺ transporting, lysosomal 13kDa, V1 subunit G2; ATP6G, ATP6G2, ATPase, H ⁺ transporting, lysosomal (vacuolar proton pump), ATPase, H ⁺ transporting, lysosomal 13kDa, V1 subunit G isoform 2; V-type proton ATPase subunit G 2; Em:AC004181.3; NG38; Vma10; V-ATPase 13 kDa subunit 2; vacuolar proton pump G subunit 2; vacuolar ATP synthase subunit G 2; H(+)-transporting two-sector ATPase, subunit G2; ATPase, H ⁺ transporting, lysosomal (vacuolar proton pump); ATP6G; VMA10; ATP6G2;

 Tel: 1-631-559-9269 1-516-512-3133

 Email: info@creative-biomart.com  Fax: 1-631-938-8127

 45-1 Ramsey Road, Shirley, NY 11967, USA

Gene ID 534

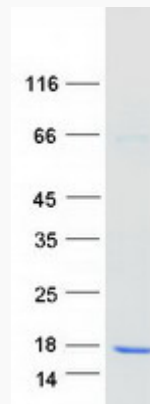
mRNA Refseq NM_138282

Protein Refseq NP_612139

MIM 606853

UniProt ID O95670

SDS-PAGE



 Tel: 1-631-559-9269 1-516-512-3133

 Email: info@creative-biomart.com  Fax: 1-631-938-8127

 45-1 Ramsey Road, Shirley, NY 11967, USA