

## Recombinant Human ATP7A protein, GST-tagged

Cat. No. ATP7A-1013H Lot. No. (See product label)

### SPECIFICATION

<b>Product Overview</b>	Human ATP7A partial ORF ( NP_000043, 1406 a.a. - 1500 a.a.) recombinant protein with GST-tag at N-terminal.
<b>Species</b>	Human
<b>Source</b>	Wheat Germ
<b>Description</b>	<p>This gene encodes a transmembrane protein that functions in copper transport across membranes. This protein is localized to the trans Golgi network, where it is predicted to supply copper to copper-dependent enzymes in the secretory pathway. It relocates to the plasma membrane under conditions of elevated extracellular copper, and functions in the efflux of copper from cells. Mutations in this gene are associated with Menkes disease, X-linked distal spinal muscular atrophy, and occipital horn syndrome. Alternatively-spliced transcript variants have been observed. [provided by RefSeq, Aug 2013]</p>
<b>Molecular Mass</b>	36.19 kDa
<b>AA Sequence</b>	FLKLYRKPTYESYELPARSQIGQKSPSEISVHVGIDDTSRNSPKLGLLDRIVNYSRASINLLSDKRSLNSVVTSEPDKHSLLVGFREDDDTAL
<b>Applications</b>	Enzyme-linked Immunoabsorbent Assay; Western Blot (Recombinant protein); Antibody Production; Protein Array
<b>Notes</b>	Best use within three months from the date of receipt of this protein.

 Tel: 1-631-559-9269 1-516-512-3133

 Email: [info@creative-biomart.com](mailto:info@creative-biomart.com)  Fax: 1-631-938-8127

 45-1 Ramsey Road, Shirley, NY 11967, USA

**Storage** Store at -80 centigrade. Aliquot to avoid repeated freezing and thawing.

**Storage Buffer** 50 mM Tris-HCl, 10 mM reduced Glutathione, pH=8.0 in the elution buffer.

## GENE INFORMATION

**Gene Name** ATP7A ATPase, Cu<sup>++</sup> transporting, alpha polypeptide [ Homo sapiens ]

**Official Symbol** ATP7A

**Synonyms** ATP7A; ATPase, Cu<sup>++</sup> transporting, alpha polypeptide; Menkes syndrome , MNK; copper-transporting ATPase 1; copper pump 1; Cu<sup>++</sup>-transporting P-type ATPase; Menkes disease-associated protein; MK; MNK; DSMAX; SMAX3; FLJ17790;

**Gene ID** 538

**mRNA Refseq** NM\_000052

**Protein Refseq** NP\_000043

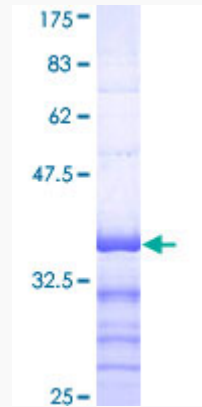
**MIM** 300011

**UniProt ID** Q04656

 Tel: 1-631-559-9269 1-516-512-3133

 Email: [info@creative-biomart.com](mailto:info@creative-biomart.com)  Fax: 1-631-938-8127

 45-1 Ramsey Road, Shirley, NY 11967, USA



12.5% SDS-PAGE Stained with Coomassie Blue.

 Tel: 1-631-559-9269 1-516-512-3133

 Email: [info@creative-biomart.com](mailto:info@creative-biomart.com)  Fax: 1-631-938-8127

 45-1 Ramsey Road, Shirley, NY 11967, USA