

Recombinant Human ATP8B1 protein, GST-tagged

Cat. No. ATP8B1-1015H Lot. No. (See product label)

SPECIFICATION

Product Overview	Human ATP8B1 partial ORF (NP_005594.1, 471 a.a. - 551 a.a.) recombinant protein with GST-tag at N-terminal.
Species	Human
Source	Wheat Germ
Description	This gene encodes a member of the P-type cation transport ATPase family, which belongs to the subfamily of aminophospholipid-transporting ATPases. The aminophospholipid translocases transport phosphatidylserine and phosphatidylethanolamine from one side of a bilayer to another. Mutations in this gene may result in progressive familial intrahepatic cholestasis type 1 and in benign recurrent intrahepatic cholestasis. [provided by RefSeq, Jul 2008]
Molecular Mass	34.65 kDa
AA Sequence	INGQIYGDHRDASQHNHNKIEQVDFSWNTYADGKLAIFYDHYLIEQIQSGKEPEVRQF FLLAVCHTVMVDRTDGQLNYQAA
Applications	Enzyme-linked Immunoabsorbent Assay; Western Blot (Recombinant protein); Antibody Production; Protein Array
Notes	Best use within three months from the date of receipt of this protein.
Storage	Store at -80 centigrade. Aliquot to avoid repeated freezing and thawing.

 Tel: 1-631-559-9269 1-516-512-3133

 Email: info@creative-biomart.com  Fax: 1-631-938-8127

 45-1 Ramsey Road, Shirley, NY 11967, USA

Storage Buffer 50 mM Tris-HCl, 10 mM reduced Glutathione, pH=8.0 in the elution buffer.

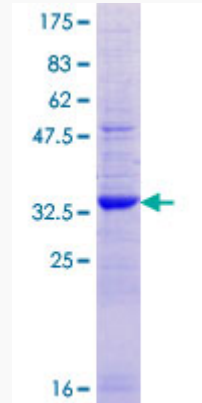
GENE INFORMATION

Gene Name	ATP8B1 ATPase, aminophospholipid transporter, class I, type 8B, member 1 [Homo sapiens]
Official Symbol	ATP8B1
Synonyms	ATP8B1; ATPase, aminophospholipid transporter, class I, type 8B, member 1; ATPase, class I, type 8B, member 1 , ATPase, Class I, type 8B, member 1 , BRIC, FIC1, PFIC1; probable phospholipid-transporting ATPase IC; ATPIC; PFIC; E1-E2 ATPase; ATPase, class I, type 8B, member 1; phospholipid-transporting ATPase IC; familial intrahepatic cholestasis type 1; BRIC; FIC1; PFIC1;
Gene ID	5205
mRNA Refseq	NM_005603
Protein Refseq	NP_005594
MIM	602397
UniProt ID	O43520

 Tel: 1-631-559-9269 1-516-512-3133

 Email: info@creative-biomart.com  Fax: 1-631-938-8127

 45-1 Ramsey Road, Shirley, NY 11967, USA



12.5% SDS-PAGE Stained with Coomassie Blue.

 Tel: 1-631-559-9269 1-516-512-3133

 Email: info@creative-biomart.com  Fax: 1-631-938-8127

 45-1 Ramsey Road, Shirley, NY 11967, USA