

## Recombinant Human ATPAF2 protein, GST-tagged

Cat. No. ATPAF2-1021H Lot. No. (See product label)

### SPECIFICATION

<b>Product Overview</b>	Human ATPAF2 full-length ORF ( NP_663729.1, 1 a.a. - 289 a.a.) recombinant protein with GST-tag at N-terminal.
<b>Species</b>	Human
<b>Source</b>	Wheat Germ
<b>Description</b>	This gene encodes an assembly factor for the F(1) component of the mitochondrial ATP synthase. This protein binds specifically to the F1 alpha subunit and is thought to prevent this subunit from forming nonproductive homooligomers during enzyme assembly. This gene is located within the Smith-Magenis syndrome region on chromosome 17. An alternatively spliced transcript variant has been described, but its biological validity has not been determined. [provided by RefSeq, Jul 2008]
<b>Molecular Mass</b>	59.2 kDa
<b>AA Sequence</b>	MWRSCRLRLDGGRRLLNRPAGGSPASMSPGPTIPSPARAYAPPTERKRFYQNVSIT QGEGGF EINLDHRK LKTPQAKLFTVPSEALAI AVATEWDSQQDTIKYYTMHLTTL CNT SLDNPTQRNKDQLIRAAVKFLD TDTICYRVEEPETLV ELQRNEWDPIIEWAEKRYGV EISSSTSIMGPSIPAKTREV L VSHLASYN TWALQGIEFVAAQLKSMVLT LGLIDLRLTV EQAVLLSRLEEEYQIQKWGNIEWAHDYELQELRART AAGTLFIHL CSESTTVKHKLLK E
<b>Applications</b>	Enzyme-linked Immunoabsorbent Assay; Western Blot (Recombinant protein); Antibody Production; Protein Array

 Tel: 1-631-559-9269 1-516-512-3133

 Email: [info@creative-biomart.com](mailto:info@creative-biomart.com)  Fax: 1-631-938-8127

 45-1 Ramsey Road, Shirley, NY 11967, USA

<b>Notes</b>	Best use within three months from the date of receipt of this protein.
<b>Storage</b>	Store at -80 centigrade. Aliquot to avoid repeated freezing and thawing.
<b>Storage Buffer</b>	50 mM Tris-HCl, 10 mM reduced Glutathione, pH=8.0 in the elution buffer.

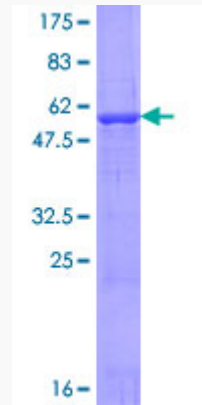
## GENE INFORMATION

<b>Gene Name</b>	ATPAF2 ATP synthase mitochondrial F1 complex assembly factor 2 [ Homo sapiens ]
<b>Official Symbol</b>	ATPAF2
<b>Synonyms</b>	ATPAF2; ATP synthase mitochondrial F1 complex assembly factor 2; ATP12; Atp12p; LP3663; MGC29736; ATP12 homolog; ATP12p; MC5DN1;
<b>Gene ID</b>	91647
<b>mRNA Refseq</b>	NM_145691
<b>Protein Refseq</b>	NP_663729
<b>MIM</b>	608918
<b>UniProt ID</b>	Q8N5M1

 Tel: 1-631-559-9269 1-516-512-3133

 Email: [info@creative-biomart.com](mailto:info@creative-biomart.com)  Fax: 1-631-938-8127

 45-1 Ramsey Road, Shirley, NY 11967, USA



12.5% SDS-PAGE Stained with Coomassie Blue.

 Tel: 1-631-559-9269 1-516-512-3133

 Email: [info@creative-biomart.com](mailto:info@creative-biomart.com)  Fax: 1-631-938-8127

 45-1 Ramsey Road, Shirley, NY 11967, USA