

Recombinant Human ATPAF2 Protein (41-289 aa), His-tagged

Cat. No. ATPAF2-349H Lot. No. (See product label)

SPECIFICATION

Product Overview	Recombinant Human ATPAF2 Protein (41-289 aa) is produced by E. coli expression system. This protein is fused with a 6xHis tag at the N-terminal. Research Area: Metabolism. Protein Description: Full Length of Mature Protein.
Species	Human
Source	E.coli
ProteinLength	41-289 aa
Description	May play a role in the assbly of the F1 component of the mitochondrial ATP synthase (ATPase).
Form	Tris-based buffer, 50% glycerol
Molecular Mass	32.5 kDa
AA Sequence	<p>APPTERKRFYQNVSIQTGGEGGFEINLDHRKLTQPQAKLFTVPSEALAIIVATEWDSQ QDTIKYYTMHLTTLCNTSLDNPTQRNKDQLIRAAVKFLDQDTICRVEEPETLVELQR NEWDPIIEWAEKRYGVEISSSTSIMGPSIPAKTREVVLVSHLASYNWALQGIEFVAAQ LKSMVLTGLIDLRLTVEQAVLLSRLEEEYQIQKWGNIEWAHDYELQELRARTAAGTL FIHLCSESTTVKHKLLKE</p>
Purity	> 90% as determined by SDS-PAGE.

 Tel: 1-631-559-9269 1-516-512-3133

 Email: info@creative-biomart.com  Fax: 1-631-938-8127

 45-1 Ramsey Road, Shirley, NY 11967, USA

Notes	Repeated freezing and thawing is not recommended. Store working aliquots at 4 centigrade for up to one week.
Storage	The shelf life is related to many factors, storage state, buffer ingredients, storage temperature and the stability of the protein itself. Generally, the shelf life of liquid form is 6 months at -20 centigrade/-80 centigrade. The shelf life of lyophilized form is 12 months at -20 centigrade/-80 centigrade.
Concentration	A hardcopy of COA with concentration instruction is sent along with the products.

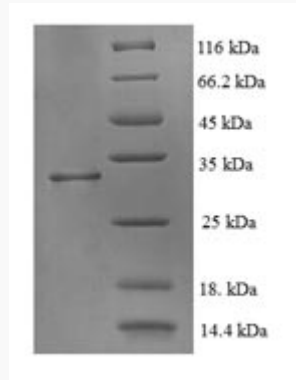
GENE INFORMATION

Gene Name	ATPAF2 ATP synthase mitochondrial F1 complex assembly factor 2 [Homo sapiens]
Official Symbol	ATPAF2
Synonyms	ATPAF2; ATP12; Atp12p; LP3663; MGC29736; ATP12 homolog; ATP12p; MC5DN1;
Gene ID	91647
mRNA Refseq	NM_145691
Protein Refseq	NP_663729
MIM	608918
UniProt ID	Q8N5M1

 Tel: 1-631-559-9269 1-516-512-3133

 Email: info@creative-biomart.com  Fax: 1-631-938-8127

 45-1 Ramsey Road, Shirley, NY 11967, USA



(Tris-Glycine gel) Discontinuous SDS-PAGE (reduced) with 5% enrichment gel and 15% separation gel.

 Tel: 1-631-559-9269 1-516-512-3133

 Email: info@creative-biomart.com  Fax: 1-631-938-8127

 45-1 Ramsey Road, Shirley, NY 11967, USA