

Recombinant Human ATPAF2 protein, His-tagged

Cat. No. ATPAF2-7843H Lot. No. (See product label)

SPECIFICATION

Product Overview Recombinant Human ATPAF2 protein(42-192 aa), fused with N-terminal His tag, was expressed in E. coli.

Species Human

Source E.coli

ProteinLength 42-192 aa

Form The purified protein was Lyophilized from sterile PBS (58mM Na₂HPO₄, 17mM NaH₂PO₄, 68mM NaCl, pH7.4). 5 % trehalose and 5 % mannitol are added as protectant before lyophilization. The elution buffer contain 300mM imidazole.

Storage Short-term storage: Store at 2-8°C for (1-2 weeks). Long-term storage: Aliquot and store at -20°C to -80°C for up to 3 months, reconstitution with sterile water and addition of an equal volume of glycerol. Avoid repeat freeze-thaw cycles.

Purity 85%, by SDS-PAGE with Coomassie Brilliant Blue staining.

GENE INFORMATION

Official Symbol [ATPAF2](#)

Synonyms ATPAF2; ATP synthase mitochondrial F1 complex assembly factor 2; ATP12; Atp12p; LP3663; MGC29736; ATP12 homolog; ATP12p; MC5DN1;

 Tel: 1-631-559-9269 1-516-512-3133

 Email: info@creative-biomart.com  Fax: 1-631-938-8127

 45-1 Ramsey Road, Shirley, NY 11967, USA

Gene ID 91647

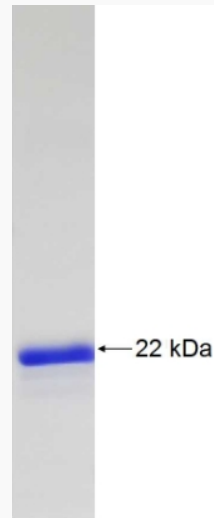
mRNA Refseq NM_145691

Protein Refseq NP_663729

MIM 608918

UniProt ID Q8N5M1

SDS-PAGE



Tel: 1-631-559-9269 1-516-512-3133

Email: info@creative-biomart.com Fax: 1-631-938-8127

45-1 Ramsey Road, Shirley, NY 11967, USA