

## Recombinant Human ATPBD1C protein, GST-tagged

**Cat. No.** ATPBD1C-1023H    **Lot. No.** (See product label)

### SPECIFICATION

<b>Product Overview</b>	Human ATPBD1C full-length ORF ( NP_057385.2, 1 a.a. - 284 a.a.) recombinant protein with GST-tag at N-terminal.
<b>Species</b>	Human
<b>Source</b>	Wheat Germ
<b>Description</b>	GPN3 (GPN-Loop GTPase 3) is a Protein Coding gene. GO annotations related to this gene include nucleotide binding and hydrolase activity.
<b>Molecular Mass</b>	59.1 kDa
<b>AA Sequence</b>	MPRYAQLVMGPAGSGKSTYCATMVQHCEALNRSVQVVNLDPAAEHFNYSVMADIR ELIEVDDVMEDDSLRFPGNGGLVFCMEYFANNFDWLENCLGHVEDDYILFDCPGQI ELYTHLPVMKQLVQQLEQWEFRVCGVFLVDSQFMVESFKFISGILAALSAMISLEIPQ VNIMTKMDLLSKKAKKEIEKFLDPDPMYSLLEDSTSDLRSKKFKKLTKAICGLIDDYSMV RFLPYDQSDEESMNIALQHIDFAIQYGEDLEFKEPKEREDESSSMFDEYFQECQDE
<b>Applications</b>	Enzyme-linked Immunoabsorbent Assay; Western Blot (Recombinant protein); Antibody Production; Protein Array
<b>Notes</b>	Best use within three months from the date of receipt of this protein.
<b>Storage</b>	Store at -80 centigrade. Aliquot to avoid repeated freezing and thawing.

 Tel: 1-631-559-9269    1-516-512-3133

 Email: [info@creative-biomart.com](mailto:info@creative-biomart.com)     Fax: 1-631-938-8127

 45-1 Ramsey Road, Shirley, NY 11967, USA

**Storage Buffer** 50 mM Tris-HCl, 10 mM reduced Glutathione, pH=8.0 in the elution buffer.

## GENE INFORMATION

**Gene Name** GPN3 GPN-loop GTPase 3 [ Homo sapiens ]

**Official Symbol** GPN3

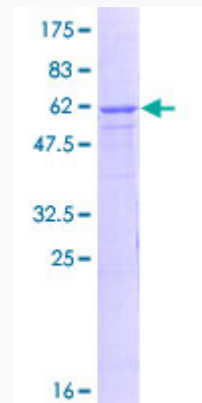
**Synonyms** GPN3; GPN-loop GTPase 3; ATP binding domain 1 family, member C , ATPBD1C; MGC14560; protein x 0004; ATP-binding domain 1 family member C; ATP binding domain 1 family, member C; ATPBD1C; MGC32810;

**Gene ID** 51184

**mRNA Refseq** NM\_001164372

**Protein Refseq** NP\_001157844

**UniProt ID** Q9UHW5



12.5% SDS-PAGE Stained with Coomassie Blue.

 Tel: 1-631-559-9269 1-516-512-3133

 Email: [info@creative-biomart.com](mailto:info@creative-biomart.com)  Fax: 1-631-938-8127

 45-1 Ramsey Road, Shirley, NY 11967, USA